



HELİSEL DİŞLİ T TİPİ İKİ KADEMELİ REDÜKTÖRLER
HELICAL GEARED T TYPE UNITS WITH DOUBLE REDUCTIONS

TB01-T

Çıkış Devri Output speeds n1 1400 d/dk	Çıkış Momenti Output Torque M2 (Nm)	Çevrim Oranı Ratio (İ:1)	Güvenilir		Max.Giriş Güçleri(KW)			Ağırlık Weight (kg)	Ölçü Sayfası Dim. Page
			Radyal Yük Per. Over Loads(N) (Pr-Pa) Giriş Input	Radyal Yük Per. Over Loads(N) (Pr1-Pa1) Çıkış Output	Max. input power				
					2800	1400	900		
616	23	2,2	800-300	400-180	2,2	1,5	1	10	C1-C2
573	25	2,4	800-300	400-180	2,2	1,5	1		
534	27	2,6	800-300	400-180	2,2	1,5	1		
494	29	2,8	800-300	400-180	2,2	1,5	1		
457	31	3,0	800-300	400-180	2,2	1,5	1		
421	34	3,3	800-300	400-180	2,2	1,5	1		
388	37	3,6	800-300	400-180	2,2	1,5	1		
356	40	3,9	800-300	400-180	2,2	1,5	1		
325	44	4,3	800-300	400-180	2,2	1,5	1		
311	46	4,5	800-300	400-180	2,2	1,5	1		
291	49	4,8	800-300	400-180	2,2	1,5	1		
269	53	5,2	800-300	400-180	2,2	1,5	1		
250	57	5,6	800-300	550-300	2,2	1,5	1		
230	62	6,1	800-300	550-300	2,2	1,5	1		
212	67	6,6	800-300	550-300	2,2	1,5	1		
197	72	7,1	800-300	550-300	2,2	1,5	1		
180	80	7,8	800-300	550-300	2,2	1,5	1		
164	86	8,5	800-300	550-300	2,2	1,5	1		
148	96	9,4	800-300	550-300	2,2	1,5	1		
134	78	10,4	800-300	550-300	1,6	1,1	0,73		
120	87	11,6	800-300	550-300	1,6	1,1	0,73		
107	97	13,0	800-300	550-300	1,6	1,1	0,73		
95	75	14,7	900-350	550-300	1,1	0,75	0,5		
90	39	15,5	900-350	550-300	0,56	0,37	0,25		
83	42	16,7	900-350	550-300	0,56	0,37	0,25		
77	45	18,0	900-350	550-300	0,56	0,37	0,25		
72	49	19,4	900-350	550-300	0,56	0,37	0,25		
66	53	21,0	900-350	550-300	0,56	0,37	0,25		
61	57	22,8	900-350	550-300	0,56	0,37	0,25		
56	62	27,7	900-350	550-300	0,56	0,37	0,25		
51	68	27,0	900-350	550-300	0,56	0,37	0,25		
47	75	29,6	1000-400	550-300	0,56	0,37	0,25		
43	82	32,5	1000-400	550-300	0,56	0,37	0,25		
38	91	36,0	1000-400	550-300	0,56	0,37	0,25		
34	101	40,0	1000-400	550-300	0,56	0,37	0,25		
31	113	45,0	1000-400	550-300	0,56	0,37	0,25		
27	129	51,0	1200-450	550-300	0,56	0,37	0,25		
23	100	58,5	1200-450	550-300	0,38	0,25	0,16		



HELİSEL DİŞLİ T TİPİ İKİ KADEMELİ REDÜKTÖRLER

HELICAL GEARED T TYPE UNITS WITH DOUBLE REDUCTIONS

TB20-T

Çıkış Devri Output speeds n1 1400 d/dk	Çıkış Momenti Output Torque M2 (Nm)	Çevrim Oranı Ratio (İ:1)	Güvenilir		Max.Giriş Güçleri(KW)			Ağırlık Weight (kg)	Ölçü Sayfası Dim. Page
			Radyal Yük Per. Over Loads(N) (Pr-Pa) Giriş Input	Radyal Yük Per. Over Loads(N) (Pr1-Pa1) Çıkış Output	Max. input power				
					2800	1400	900		
616	34	2,2	1300-600	650-400	3,3	2,2	1,5	15	C3-C4
569	37	2,4	1300-600	650-400	3,3	2,2	1,5		
526	40	2,6	1300-600	650-400	3,3	2,2	1,5		
482	43	2,9	1300-600	650-400	3,3	2,2	1,5		
444	47	3,2	1300-600	650-400	3,3	2,2	1,5		
406	52	3,4	1300-600	650-400	3,3	2,2	1,5		
370	57	3,8	1300-600	650-400	3,3	2,2	1,5		
335	62	4,2	1300-600	650-400	3,3	2,2	1,5		
303	70	4,6	1300-600	650-400	3,3	2,2	1,5		
271	77	5,2	1300-600	650-400	3,3	2,2	1,5		
241	87	5,8	1300-600	650-400	3,3	2,2	1,5		
220	95	6,3	1300-600	650-400	3,3	2,2	1,5		
213	98	6,6	1300-600	650-400	3,3	2,2	1,5		
204	102	6,9	1300-600	650-400	3,3	2,2	1,5		
188	111	7,4	1300-600	650-400	3,3	2,2	1,5		
173	121	8,0	1300-600	650-400	3,3	2,2	1,5		
159	132	8,8	1300-600	650-400	3,3	2,2	1,5		
145	144	9,6	1300-600	650-400	3,3	2,2	1,5		
132	159	10,6	1300-600	650-400	3,3	2,2	1,5		
120	174	11,6	1300-600	650-400	3,3	2,2	1,5		
108	193	12,9	1300-600	650-400	3,3	2,2	1,5		
97	147	14,4	1500-650	650-400	2,2	1,5	1		
86	165	16,2	1500-650	650-400	2,2	1,5	1		
76	188	18,4	1500-650	650-400	2,2	1,5	1		
75	69	18,5	1500-650	650-400	0,83	0,55	0,37		
69	75	20,1	1500-650	650-400	0,83	0,55	0,37		
64	81	21,7	1500-650	650-400	0,83	0,55	0,37		
59	88	23,6	1500-650	650-400	0,83	0,55	0,37		
54	96	25,7	1500-650	650-400	0,83	0,55	0,37		
49	105	28,0	1700-700	650-400	0,83	0,55	0,37		
45	115	30,0	1700-700	650-400	0,83	0,55	0,37		
41	127	34,0	1700-700	650-400	0,83	0,55	0,37		
37	141	37,0	1700-700	650-400	0,83	0,55	0,37		
33	158	42,0	1700-700	650-400	0,83	0,55	0,37		
29	178	47,0	1900-750	650-400	0,83	0,55	0,37		
26	202	53,0	1900-750	650-400	0,83	0,55	0,37		



HELİSEL DİŞLİ T TİPİ İKİ KADEMELİ REDÜKTÖRLER
HELICAL GEARED T TYPE UNITS WITH DOUBLE REDUCTIONS

TB30-T

Çıkış Devri Output speeds n1 1400 d/dk	Çıkış Momenti Output Torque M2 (Nm)	Çevrim Oranı Ratio (İ:1)	Güvenilir		Max.Giriş Güçleri(KW)			Ağırlık Weight (kg)	Ölçü Sayfası Dim. Page
			Radyal Yük Per. Over Loads(N) (Pr-Pa) Giriş Input	Radyal Yük Per. Over Loads(N) (Pr1-Pa1) Çıkış Output	Max. input power				
					2800	1400	900		
469	81	3,0	2400-850	850-550	6	4	2,7	22	C5-C6
444	85	3,2	2400-850	850-550	6	4	2,7		
412	92	3,4	2400-850	850-550	6	4	2,7		
382	99	3,7	2400-850	850-550	6	4	2,7		
353	108	4,0	2400-850	850-550	6	4	2,7		
325	117	4,3	2400-850	850-550	6	4	2,7		
298	127	4,7	2400-850	850-550	6	4	2,7		
278	137	5,0	2400-850	850-550	6	4	2,7		
247	154	5,6	2400-850	850-550	6	4	2,7		
223	171	6,3	2400-850	850-550	6	4	2,7		
200	191	7,0	2400-850	850-550	6	4	2,7		
177	215	8,0	2400-850	850-550	6	4	2,7		
165	231	8,5	2400-850	850-550	6	4	2,7		
153	248	9,0	2400-850	850-550	6	4	2,7		
142	268	9,9	2400-850	850-550	6	4	2,7		
130	292	10,7	2400-850	850-550	6	4	2,7		
120	316	11,6	2400-850	850-550	6	4	2,7		
111	343	12,6	2400-850	850-550	6	4	2,7		
101	376	13,8	2400-850	850-550	6	4	2,7		
92	414	15,2	2400-850	850-550	6	4	2,7		
82	461	17,0	2600-950	850-550	6	4	2,7		
74	516	19,0	2600-950	850-550	6	4	2,7		
70	409	20,0	2600-950	850-550	4,5	3	2		
65	440	21,5	2600-950	850-550	4,5	3	2		
60	472	23,0	2600-950	850-550	4,5	3	2		
56	255	25,0	2600-950	850-550	2,2	1,5	1		
51	276	27,0	2600-950	850-550	2,2	1,5	1		
47	300	29,0	3000-1150	850-550	2,2	1,5	1		
43	327	32,0	3000-1150	850-550	2,2	1,5	1		
40	358	35,0	3000-1150	850-550	2,2	1,5	1		
36	394	38,0	3000-1150	850-550	2,2	1,5	1		
32	438	42,0	3000-1150	850-550	2,2	1,5	1		
29	488	47,0	3300-1350	850-550	2,2	1,5	1		
27	387	51,5	3300-1350	850-550	2,2	1,5	1		
24	430	57,2	3300-1350	850-550	1,6	1,1	0,73		
21	208	64,0	3300-1350	850-550	1,1	0,75	0,5		



HELİSEL DİŞLİ T TİPİ İKİ KADEMELİ REDÜKTÖRLER
HELICAL GEARED T TYPE UNITS WITH DOUBLE REDUCTIONS

TB33-T

Çıkış Devri Output speeds n1 1400 d/dk	Çıkış Momenti Output Torque M2 (Nm)	Çevrim Oranı Ratio (İ:1)	Güvenilir		Max.Giriş Güçleri(KW)			Ağırlık Weight (kg)	Ölçü Sayfası Dim. Page
			Radyal Yük Per. Over Loads(N) (Pr-Pa) Giriş Input	Radyal Yük Per. Over Loads(N) (Pr1-Pa1) Çıkış Output	Max. input power				
					2800	1400	900		
669	132	2,1	2400-900	1100-700	11,5	9,2	6,1	32	C7-C8
486	180	2,9	2400-900	1100-700	11,5	9,2	6,1		
477	183	3,0	2400-900	1100-700	11,5	9,2	6,1		
437	200	3,2	2400-900	1100-700	11,5	9,2	6,1		
411	213	3,4	2400-900	1100-700	11,5	9,2	6,1		
380	231	3,7	2400-900	1100-700	11,5	9,2	6,1		
350	251	4,0	2400-900	1100-700	11,5	9,2	6,1		
321	273	4,4	2400-900	1100-700	11,5	9,2	6,1		
294	240	4,8	2400-900	1100-700	9,3	7,4	4,9		
269	262	5,2	2400-900	1100-700	9,3	7,4	4,9		
244	288	5,7	2400-900	1100-700	9,3	7,4	4,9		
222	318	6,3	2400-900	1100-700	9,3	7,4	4,9		
200	353	7,0	2400-900	1100-700	9,3	7,4	4,9		
179	393	7,8	2400-900	1100-700	9,3	7,4	4,9		
159	444	8,8	2400-900	1100-700	9,3	7,4	4,9		
140	504	10,0	2400-900	1100-700	9,3	7,4	4,9		
128	409	11,0	2400-900	1100-700	6,9	5,5	3,7		
114	457	12,2	2400-900	1100-700	6,9	5,5	3,7		
102	514	13,7	2400-900	1100-700	6,9	5,5	3,7		
89	587	15,6	3000-1100	1100-700	6,9	5,5	3,7		
84	247	16,5	3000-1100	1100-700	2,8	2,2	1,5		
78	268	18,0	3000-1100	1100-700	2,8	2,2	1,5		
72	291	19,4	3000-1100	1100-700	2,8	2,2	1,5		
66	318	21,2	3000-1100	1100-700	2,8	2,2	1,5		
60	346	23,1	3000-1100	1100-700	2,8	2,2	1,5		
55	378	25,2	3000-1100	1100-700	2,8	2,2	1,5		
50	417	27,8	3000-1100	1100-700	2,8	2,2	1,5		
45	459	30,6	3400-1300	1100-700	2,8	2,2	1,5		
41	511	34,0	3400-1300	1100-700	2,8	2,2	1,5		
36	570	38,0	3400-1300	1100-700	2,8	2,2	1,5		
32	642	42,0	3400-1300	1100-700	2,8	2,2	1,5		
28	729	48,5	3800-1500	1100-700	2,8	2,2	1,5		



HELİSEL DİŞLİ T TİPİ İKİ KADEMELİ REDÜKTÖRLER

HELICAL GEARED T TYPE UNITS WITH DOUBLE REDUCTIONS

TB50-T

Çıkış Devri Output speeds n1 1400 d/dk	Çıkış Momenti Output Torque M2 (Nm)	Çevrim Oranı Ratio (İ:1)	Güvenilir		Max.Giriş Güçleri(KW)			Ağırlık Weight (kg)	Ölçü Sayfası Dim. Page
			Radyal Yük Per. Over Loads(N) (Pr-Pa) Giriş Input	Radyal Yük Per. Over Loads(N) (Pr1-Pa1) Çıkış Output	Max. input power				
					2800	1400	900		
673	265	2,1	3000-1200	1100-700	18,7	14	10	74	C9-C10
622	287	2,3	3000-1200	1100-700	18,7	14	10		C11-C12
573	311	2,4	3000-1200	1100-700	18,7	14	10		
530	336	2,6	3000-1200	1100-700	18,7	14	10		
487	366	2,8	3000-1200	1100-700	18,7	14	10		
447	399	3,1	3000-1200	1100-700	18,7	14	10		
411	433	3,4	3000-1200	1100-700	18,7	14	10		
373	478	3,8	3000-1200	1100-700	18,7	14	10		
338	528	4,1	3000-1200	1100-700	18,7	14	10		
299	597	4,7	3000-1200	1100-700	18,7	14	10		
269	663	5,2	3000-1200	1100-700	18,7	14	10		
244	731	5,7	3000-1200	1100-700	18,7	14	10		
237	751	5,9	3000-1200	1100-700	18,7	14	10		
219	815	6,4	3000-1200	1100-700	18,7	14	10		
203	877	6,9	3000-1200	1100-700	18,7	14	10		
188	947	7,4	3000-1200	1100-700	18,7	14	10		
173	1032	8,0	3000-1200	1100-700	18,7	14	10		
159	1123	8,8	3000-1200	1100-700	18,7	14	10		
145	1227	9,6	3000-1200	1100-700	18,7	14	10		
132	1352	10,6	3000-1200	1100-700	18,7	14	10		
120	1480	11,6	3000-1200	1100-700	18,7	14	10		
108	1205	12,9	3000-1200	1100-700	13,7	10	7,3		
97	1346	14,4	3500-1500	1100-700	13,7	10	7,3		
86	1514	16,2	3500-1500	1100-700	13,7	10	7,3		
80	472	17,3	3500-1500	1100-700	5	4	2,7		
74	510	18,7	3500-1500	1100-700	5	4	2,7		
70	545	20,0	3500-1500	1100-700	5	4	2,7		
63	597	21,9	3500-1500	1100-700	5	4	2,7		
58	649	23,8	3500-1500	1100-700	5	4	2,7		
54	707	25,9	3500-1500	1100-700	5	4	2,7		
49	773	28,3	3900-1700	1100-700	5	4	2,7		
45	847	31,0	3900-1700	1100-700	5	4	2,7		
40	933	34,2	3900-1700	1100-700	5	4	2,7		
36	1035	37,9	3900-1700	1100-700	5	4	2,7		
32	1161	42,5	3900-1700	1100-700	5	4	2,7		
29	1299	47,0	4500-1900	1100-700	5	4	2,7		



HELİSEL DİŞLİ T TİPİ İKİ KADEMELİ REDÜKTÖRLER

HELICAL GEARED T TYPE UNITS WITH DOUBLE REDUCTIONS

TB60-T

Çıkış Devri Output speeds n1 1400 d/dk	Çıkış Momenti Output Torque M2 (Nm)	Çevrim Oranı Ratio (İ:1)	Güvenilir		Max.Giriş Güçleri(KW)			Ağırlık Weight (kg)	Ölçü Sayfası Dim. Page
			Radyal Yük Per. Over Loads(N) (Pr-Pa) Giriş Input	Radyal Yük Per. Over Loads(N) (Pr1-Pa1) Çıkış Output	Max. input power				
					2800	1400	900		
673	312	2,0	5500-2100	1250-800	22	17	14,6	148	C13-C14
622	337	2,3	5500-2100	1250-800	22	17	14,6		C15
573	366	2,4	5500-2100	1250-800	22	17	14,6		
530	396	2,6	5500-2100	1250-800	22	17	14,6		
484	430	2,9	5500-2100	1250-800	22	17	14,6		
447	469	3,1	5500-2100	1250-800	22	17	14,6		
411	510	3,4	5500-2100	1250-800	22	17	14,6		
373	562	3,8	5500-2100	1250-800	22	17	14,6		
338	621	4,1	5500-2100	1250-800	22	17	14,6		
299	702	4,7	5500-2100	1250-800	22	17	14,6		
269	780	5,2	5500-2100	1250-800	22	17	14,6		
244	860	5,7	5500-2100	1250-800	22	17	14,6		
237	884	5,9	5500-2100	1250-800	22	17	14,6		
220	954	6,4	5500-2100	1250-800	22	17	14,6		
203	1032	6,9	5500-2100	1250-800	22	17	14,6		
188	1115	7,4	5500-2100	1250-800	22	17	14,6		
173	1214	8,0	5500-2100	1250-800	22	17	14,6		
159	1321	8,8	5500-2100	1250-800	22	17	14,6		
145	1443	9,6	5500-2100	1250-800	22	17	14,6		
132	1591	10,6	5500-2100	1250-800	22	17	14,6		
120	1742	11,6	5500-2100	1250-800	22	17	14,6		
108	1936	12,9	5500-2100	1250-800	22	17	14,6		
97	2161	14,4	6200-2300	1250-800	22	17	14,6		
86	2431	16,2	6200-2300	1250-800	22	17	14,6		
80	873	17,3	6200-2300	1250-800	7,4	6,3	4,9		
74	944	18,7	6200-2300	1250-800	7,4	6,3	4,9		
69	1019	20,2	6200-2300	1250-800	7,4	6,3	4,9		
63	1105	21,9	6200-2300	1250-800	7,4	6,3	4,9		
58	1201	23,8	6200-2300	1250-800	7,4	6,3	4,9		
54	1308	25,9	6200-2300	1250-800	7,4	6,3	4,9		
49	1430	28,3	7200-2700	1250-800	7,4	6,3	4,9		
45	1566	31,0	7200-2700	1250-800	7,4	6,3	4,9		
40	1727	34,2	7200-2700	1250-800	7,4	6,3	4,9		
36	1915	37,9	7200-2700	1250-800	7,4	6,3	4,9		
32	2148	42,5	7200-2700	1250-800	7,4	6,3	4,9		
29	2403	47,5	7800-3100	1250-800	7,4	6,3	4,9		



HELİSEL DİŞLİ T TİPİ İKİ KADEMELİ REDÜKTÖRLER

HELICAL GEARED T TYPE UNITS WITH DOUBLE REDUCTIONS

TB70-T

Çıkış Devri Output speeds n1 1400 d/dk	Çıkış Momenti Output Torque M2 (Nm)	Çevrim Oranı Ratio (İ:1)	Güvenilir		Max.Giriş Güçleri(KW)			Ağırlık Weight (kg)	Ölçü Sayfası Dim. Page
			Radyal Yük Per. Over Loads(N) (Pr-Pa) Giriş Input	Radyal Yük Per. Over Loads(N) (Pr1-Pa1) Çıkış Output	Max. input power				
					2800	1400	900		
673	638	2,1	8000-2900	1800-1000	45	37	30	238	C16-C17
622	690	2,3	8000-2900	1800-1000	45	37	30		C18-C19
573	749	2,4	8000-2900	1800-1000	45	37	30		
530	810	2,6	8000-2900	1800-1000	45	37	30		
487	880	2,9	8000-2900	1800-1000	45	37	30		
447	960	3,1	8000-2900	1800-1000	45	37	30		
411	1043	3,4	8000-2900	1800-1000	45	37	30		
373	1151	3,8	8000-2900	1800-1000	45	37	30		
338	1271	4,1	8000-2900	1800-1000	45	37	30		
299	1436	4,7	8000-2900	1800-1000	45	37	30		
269	1596	5,2	8000-2900	1800-1000	45	37	30		
244	1759	5,7	8000-2900	1800-1000	45	37	30		
237	1808	5,9	8000-2900	1800-1000	45	37	30		
220	1952	6,4	8000-2900	1800-1000	45	37	30		
203	2112	6,9	8000-2900	1800-1000	45	37	30		
188	2281	7,4	8000-2900	1800-1000	45	37	30		
173	2484	8,1	8000-2900	1800-1000	45	37	30		
159	2702	8,8	8000-2900	1800-1000	45	37	30		
145	2953	9,6	8000-2900	1800-1000	45	37	30		
132	3255	10,6	8000-2900	1800-1000	45	37	30		
120	2929	11,6	8000-2900	1800-1000	37	30	24		
108	3256	12,9	8000-2900	1800-1000	37	30	24		
97	2947	14,4	9000-3500	1800-1000	30	24	20		
86	3315	16,2	9000-3500	1800-1000	30	24	20		
85	2017	16,4	9000-3500	1800-1000	18	15	12		
79	2236	17,7	9000-3500	1800-1000	18	15	12		
72	2436	19,3	9000-3500	1800-1000	18	15	12		
66	2664	21,1	9000-3500	1800-1000	18	15	12		
60	2905	23,0	9000-3500	1800-1000	18	15	12		
55	3183	25,2	9000-3500	1800-1000	18	15	12		
50	3512	27,8	9000-3500	1800-1000	18	15	12		
45	3891	30,8	10900-4000	1800-1000	18	15	12		
40	3528	34,4	10900-4000	1800-1000	15	12	9		
36	3957	38,6	10900-4000	1800-1000	15	12	9		



HELİSEL DİŞLİ T TİPİ İKİ KADEMELİ REDÜKTÖRLER

HELICAL GEARED T TYPE UNITS WITH DOUBLE REDUCTIONS

TB80-T

Çıkış Devri Output speeds n1 1400 d/dk	Çıkış Momenti Output Torque M2 (Nm)	Çevrim Oranı Ratio (İ:1)	Güvenilir		Max.Giriş Güçleri(KW)			Ağırlık Weight (kg)	Ölçü Sayfası Dim. Page
			Radyal Yük Per. Over Loads(N) (Pr-Pa) Giriş Input	Radyal Yük Per. Over Loads(N) (Pr1-Pa1) Çıkış Output	Max. input power				
					2800	1400	900		
673	1277	2,1	16000-6300	1800-1000	90	75	60	395	C20-C21
622	1381	2,3	16000-6300	1800-1000	90	75	60		
573	1498	2,4	16300-6300	1800-1000	90	75	60		
530	1620	2,6	16000-6301	1800-1000	90	75	60		
487	1761	2,9	16300-6301	1800-1000	90	75	60		
447	1921	3,1	16000-6302	1800-1000	90	75	60		
411	2087	3,4	16300-6302	1800-1000	90	75	60		
373	2302	3,8	16000-6303	1800-1000	90	75	60		
338	2542	4,1	16300-6303	1800-1000	90	75	60		
299	2873	4,7	16000-6304	1800-1000	90	75	60		
269	3192	5,2	16300-6304	1800-1000	90	75	60		
244	3518	5,7	16000-6305	1800-1000	90	75	60		
237	3617	5,9	16300-6305	1800-1000	90	75	60		
220	3905	6,4	16000-6306	1800-1000	90	75	60		
209	4102	6,7	16300-6306	1800-1000	90	75	60		
188	4562	7,4	16000-6307	1800-1000	90	75	60		
173	4968	8,1	16300-6307	1800-1000	90	75	60		
159	5405	8,8	16000-6308	1800-1000	90	75	60		
145	5907	9,6	16300-6308	1800-1000	90	75	60		
132	3979	10,6	16000-6309	1800-1000	55	37	18		
120	4355	11,6	16300-6309	1800-1000	55	37	18		
108	4841	12,9	16000-6310	1800-1000	55	37	18		
97	5403	14,4	18000-7200	1800-1000	55	37	18		
86	6079	16,2	18000-7200	1800-1000	55	37	18		
80	2183	13,7	18000-7200	1800-1000	18	15	12		
74	2361	18,7	18000-7200	1800-1000	18	15	12		
39	2549	20,2	18000-7200	1800-1000	18	15	12		
63	2764	21,9	18000-7200	1800-1000	18	15	12		
58	3004	23,8	18000-7200	1800-1000	18	15	12		
54	3271	25,9	18000-7200	1800-1000	18	15	12		
49	3576	28,3	22000-9300	1800-1000	18	15	12		
45	3917	31,0	22000-9300	1800-1000	18	15	12		
40	4319	34,2	22000-9300	1800-1000	18	15	12		
36	4787	37,9	22000-9300	1800-1000	18	15	12		
32	5370	42,5	22000-9300	1800-1000	18	15	12		
29	6009	47,5	26000-10000	1800-1000	18	15	12		



HELİSEL DİŞLİ T TİPİ ÜÇ KADEMELİ REDÜKTÖRLER
HELICAL GEARED T TYPE UNITS WITH TRIPLE REDUCTIONS

TB010-T

Çıkış Devri Output speeds n1 1400 d/dk	Çıkış Momenti Output Torque M2 (Nm)	Çevrim Oranı Ratio (İ:1)	Güvenilir Radyal Yük Per. Over Loads(N) (Pr-Pa) Giriş Input	Güvenilir Radyal Yük Per. Over Loads(N) (Pr1-Pa1) Çıkış Output	Max.Giriş Güçleri(KW) Max. input power	Ağırlık Weight (kg)	Ölçü Sayfası Dim. Page
					1400		
25	97	53,0	1200-450	550-300	0,26	12	C22-C23
23	97	59,0	1200-450	550-300	0,23		
21	98	65,0	1200-450	550-300	0,18		
18	98	73,0	1200-450	550-300	0,16		
16	98	83,0	1200-450	550-300	0,13		
15	99	88,0	1200-450	550-300	0,14		
14	99	95,0	1300-500	550-300	0,13		
13	99	103,0	1300-500	550-300	0,12		
12	99	112,0	1300-500	550-300	0,11		
11	99	121,0	1300-500	550-300	0,1		
10	100	132,0	1300-500	550-300	0,09		
9,3	100	145,0	1300-500	550-300	0,08		
8,5	100	160,0	1300-500	550-300	0,08		
7,7	100	177,0	1300-500	550-300	0,07		
6,9	100	197,0	1300-500	550-300	0,06		
6,1	100	221,0	1300-500	550-300	0,05		
5,4	101	251,0	1300-500	550-300	0,05		
4,7	101	288,0	1300-500	550-300	0,05		



HELİSEL DİŞLİ T TİPİ ÜÇ KADEMELİ REDÜKTÖRLER
HELICAL GEARED T TYPE UNITS WITH TRIPLE REDUCTIONS

TB200-T

Çıkış Devri Output speeds n1 1400 d/dk	Çıkış Momenti Output Torque M2 (Nm)	Çevrim Oranı Ratio (İ:1)	Güvenilir Radyal Yük Per. Over Loads(N) (Pr-Pa) Giriş Input	Güvenilir Radyal Yük Per. Over Loads(N) (Pr1-Pa1) Çıkış Output	Max.Giriş Güçleri(KW) Max. input power	Ağırlık Weight (kg)	Ölçü Sayfası Dim. Page
					1400		
25	141	54,0	1900-750	550-300	0,37	19	C24-C25
23	155	66,0	1900-750	550-300	0,37		
20	172	66,0	1900-750	550-300	0,37		
18	189	73,0	1900-750	550-300	0,37		
16	189	81,0	1900-750	550-300	0,33		
15	193	94,0	2100-850	550-300	0,3		
12	192	114,0	2100-850	550-300	0,24		
11	191	123,0	2100-850	550-300	0,22		
10	189	134,0	2100-850	550-300	0,2		
9,3	195	146,0	2100-850	550-300	0,19		
8,5	191	159,0	2100-850	550-300	0,17		
7,8	195	175,0	2100-850	550-300	0,16		
7	191	193,0	2100-850	550-300	0,14		
6,4	193	214,0	2100-850	550-300	0,13		
5,7	184	239,0	2100-850	550-300	0,11		
5,1	187	269,0	2100-850	550-300	0,1		
4,5	191	305,0	2100-850	550-300	0,09		



HELİSEL DİŞLİ T TİPİ ÜÇ KADEMELİ REDÜKTÖRLER
HELICAL GEARED T TYPE UNITS WITH TRIPLE REDUCTIONS

TB300-T

Çıkış Devri Output speeds n1 1400 d/dk	Çıkış Momenti Output Torque M2 (Nm)	Çevrim Oranı Ratio (İ:1)	Güvenilir Radyal Yük Per. Over Loads(N) (Pr-Pa) Giriş Input	Güvenilir Radyal Yük Per. Over Loads(N) (Pr1-Pa1) Çıkış Output	Max.Giriş Güçleri(KW) Max. input power	Ağırlık Weight (kg)	Ölçü Sayfası Dim. Page
					1400		
20	344	66	3300-1350	550-300	0,75	28	C26-C27
19	373	72	3300-1350	550-300	0,75		
17	392	78	3300-1350	550-300	0,75		
14,5	395	95	3800-1500	550-300	0,6		
13,1	393	105	3800-1500	550-300	0,54		
11,7	391	117	3800-1500	550-300	0,48		
11,1	318	124	3800-1500	550-300	0,37		
10,1	349	136	3800-1500	550-300	0,37		
9,1	388	152	3800-1500	550-300	0,37		
8,2	384	169	3800-1500	550-300	0,33		
7,7	384	180	3800-1500	550-300	0,31		
7,1	390	193	3800-1500	550-300	0,29		
6,6	390	203	3800-1500	550-300	0,27		
6,2	385	224	3800-1500	550-300	0,25		
5,7	385	242	3800-1500	550-300	0,23		
5,2	404	263	3800-1500	550-300	0,22		
4,8	397	288	3800-1500	550-300	0,2		
4,4	390	314	3800-1500	550-300	0,18		
4	382	347	3800-1500	550-300	0,16		
3,6	397	385	3800-1500	550-300	0,15		
3,2	387	430	3800-1500	550-300	0,13		



HELİSEL DİŞLİ T TİPİ ÜÇ KADEMELİ REDÜKTÖRLER
HELICAL GEARED T TYPE UNITS WITH TRIPLE REDUCTIONS

TB330-T

Çıkış Devri Output speeds n1 1400 d/dk	Çıkış Momenti Output Torque M2 (Nm)	Çevrim Oranı Ratio (İ:1)	Güvenilir Radyal Yük Per. Over Loads(N) (Pr-Pa) Giriş Input	Güvenilir Radyal Yük Per. Over Loads(N) (Pr1-Pa1) Çıkış Output	Max.Giriş Güçleri(KW) Max. input power	Ağırlık Weight (kg)	Ölçü Sayfası Dim. Page
					1400		
26,4	542	53	3800-1500	850-550	1,5	44	C28-C29
24	596	58	3800-1500	850-550	1,5		
21,8	657	63	3800-1500	850-550	1,5		
19,6	667	70	3800-1500	850-550	1,37		
17,6	667	79	3800-1500	850-550	1,23		
15,6	667	89	3800-1500	850-550	1,09		
13,6	668	102	4200-1700	850-550	0,95		
12,9	668	108	4200-1700	850-550	0,9		
11,9	668	117	4200-1700	850-550	0,83		
10,9	669	127	4200-1700	850-550	0,76		
10	669	138	4200-1700	850-550	0,7		
9,2	669	151	4200-1700	850-550	0,64		
8,4	669	165	4200-1700	850-550	0,58		
7,6	669	181	4200-1700	850-550	0,53		
6,9	669	200	4200-1700	850-550	0,48		
6,3	670	222	4200-1700	850-550	0,44		
5,6	670	248	4200-1700	850-550	0,39		
5	670	280	4200-1700	850-550	0,35		
4,4	672	317	4200-1700	850-550	0,31		



HELİSEL DİŞLİ T TİPİ ÜÇ KADEMELİ REDÜKTÖRLER
HELICAL GEARED T TYPE UNITS WITH TRIPLE REDUCTIONS

TB500-T

Çıkış Devri Output speeds n1 1400 d/dk	Çıkış Momenti Output Torque M2 (Nm)	Çevrim Oranı Ratio (İ:1)	Güvenilir Radyal Yük Per. Over Loads(N) (Pr-Pa) Giriş Input	Güvenilir Radyal Yük Per. Over Loads(N) (Pr1-Pa1) Çıkış Output	Max.Giriş Güçleri(KW) Max. input power	Ağırlık Weight (kg)	Ölçü Sayfası Dim. Page
					1400		
28,3	1143	50	4500-1500	950-600	3,39	86	C30-C31
25,8	1143	55	4500-1500	950-600	3,09		
23,7	1144	60	4500-1500	950-600	2,84		
21,5	1146	65	4500-1500	950-600	2,58		
19,6	1145	72	4500-1500	950-600	2,35		
17,6	1144	80	4500-1500	950-600	2,11		
15,8	1142	90	4500-1500	950-600	1,89		
13,9	1140	102	5200-2100	950-600	1,66		
13,4	1140	106	5200-2100	950-600	1,6		
12,1	1144	117	5200-2100	950-600	1,45		
10,8	1140	131	5200-2100	950-600	1,29		
9,7	1142	147	5200-2100	950-600	1,16		
9	1146	157	5200-2100	950-600	1,08		
8,3	1139	172	5200-2100	950-600	0,99		
7,6	1143	188	5200-2100	950-600	0,91		
6,9	1134	206	5200-2100	950-600	0,82		
6,2	1139	229	5200-2100	950-600	0,74		
5,6	1142	252	5200-2100	950-600	0,67		
5,1	1142	281	5200-2100	950-600	0,61		
4,5	1146	316	5200-2100	950-600	0,54		
4,3	1132	332	5200-2100	950-600	0,51		
3,9	1126	368,0	5200-2100	950-600	0,46		
3,5	1146	410,0	5200-2100	950-600	0,42		
3,1	1139	461,0	5200-2100	950-600	0,37		



HELİSEL DİŞLİ T TİPİ ÜÇ KADEMELİ REDÜKTÖRLER
HELICAL GEARED T TYPE UNITS WITH TRIPLE REDUCTIONS

TB600-T

Çıkış Devri Output speeds n1 1400 d/dk	Çıkış Momenti Output Torque M2 (Nm)	Çevrim Oranı Ratio (İ:1)	Güvenilir Radyal Yük Per. Over Loads(N) (Pr-Pa) Giriş Input	Güvenilir Radyal Yük Per. Over Loads(N) (Pr1-Pa1) Çıkış Output	Max.Giriş Güçleri(KW) Max. input power	Ağırlık Weight (kg)	Ölçü Sayfası Dim. Page
					1400		
28,9	2769	461	7800-3100	950-600	8,38	165	C32-C33
26,4	2770	410	7800-3100	950-600	7,66		
22	2769	368	7800-3100	950-600	6,38		
20	2769	316	7800-3100	950-600	5,8		
18	2769	281	7800-3100	950-600	5,22		
16,1	2770	252	7800-3100	950-600	4,66		
14,2	2770	229	8500-3400	950-600	4,12		
13,7	2767	206	8500-3400	950-600	3,97		
12,3	4324	188	8500-3400	950-600	5,57		
11,1	2770	172	8500-3400	950-600	3,22		
9,9	2768	157	8500-3400	950-600	2,87		
9,2	2283	147	8500-3400	950-600	2,2		
8,4	2501	131	8500-3400	950-600	2,2		
7,7	2728	117	8500-3400	950-600	2,2		
7	2769	106	8500-3400	950-600	2,03		
6,3	2774	102	8500-3400	950-600	1,83		
5,8	2766	90	8500-3400	950-600	1,68		
5,2	2773	80	8500-3400	950-600	1,51		
4,6	2761	72	8500-3400	950-600	1,33		
3,9	2693	65	8500-3400	950-600	1,1		
3,5	2783	55	8500-3400	950-600	1,02		
3,1	2772	50,0	8500-3400	950-600	0,9		



HELİSEL DİŞLİ T TİPİ ÜÇ KADEMELİ REDÜKTÖRLER
HELICAL GEARED T TYPE UNITS WITH TRIPLE REDUCTIONS

TB700-T

Çıkış Devri Output speeds n1 1400 d/dk	Çıkış Momenti Output Torque M2 (Nm)	Çevrim Oranı Ratio (İ:1)	Güvenilir Radyal Yük Per. Over Loads(N) (Pr-Pa) Giriş Input	Güvenilir Radyal Yük Per. Over Loads(N) (Pr1-Pa1) Çıkış Output	Max.Giriş Güçleri(KW) Max. input power	Ağırlık Weight (kg)	Ölçü Sayfası Dim. Page
					1400		
29,5	3917	50	11500-4500	1250-800	12,1	258	C34-C35
26,6	3913	55	11500-4500	1250-800	10,9		
23,9	3915	61	11500-4500	1250-800	9,8		
21,9	3915	66	11500-4500	1250-800	8,98		
20	3915	73	11500-4500	1250-800	8,2		
18,1	3914	80	11500-4500	1250-800	7,42		
16,3	3913	89	11500-4500	1250-800	6,68		
14,8	3916	99	16000-5200	1250-800	6,07		
13	3915	112	16000-5200	1250-800	5,3		
12,5	3919	117	16000-5200	1250-800	5,13		
11,2	3913	130	16000-5200	1250-800	4,59		
10,1	3914	145	16000-5200	1250-800	4,14		
9	3915	163	16000-5200	1250-800	3,69		
8,2	3913	179	16000-5200	1250-800	3,36		
7,5	3921	196	16000-5200	1250-800	3,08		
6,8	3918	215	16000-5200	1250-800	2,79		
6,2	3912	236	16000-5200	1250-800	2,54		
5,6	3922	262	16000-5200	1250-800	2,3		
5	3915	293	16000-5200	1250-800	2,05		
4,4	3906	329	16000-5200	1250-800	1,8		
4,2	3910	344	16000-5200	1250-800	1,72		
3,8	3920	382	16000-5200	1250-800	1,56		
3,4	3904	426	16000-5200	1250-800	1,39		
3,1	3912	479	16000-5200	1250-800	1,27		



HELİSEL DİŞLİ T TİPİ ÜÇ KADEMELİ REDÜKTÖRLER
HELICAL GEARED T TYPE UNITS WITH TRIPLE REDUCTIONS

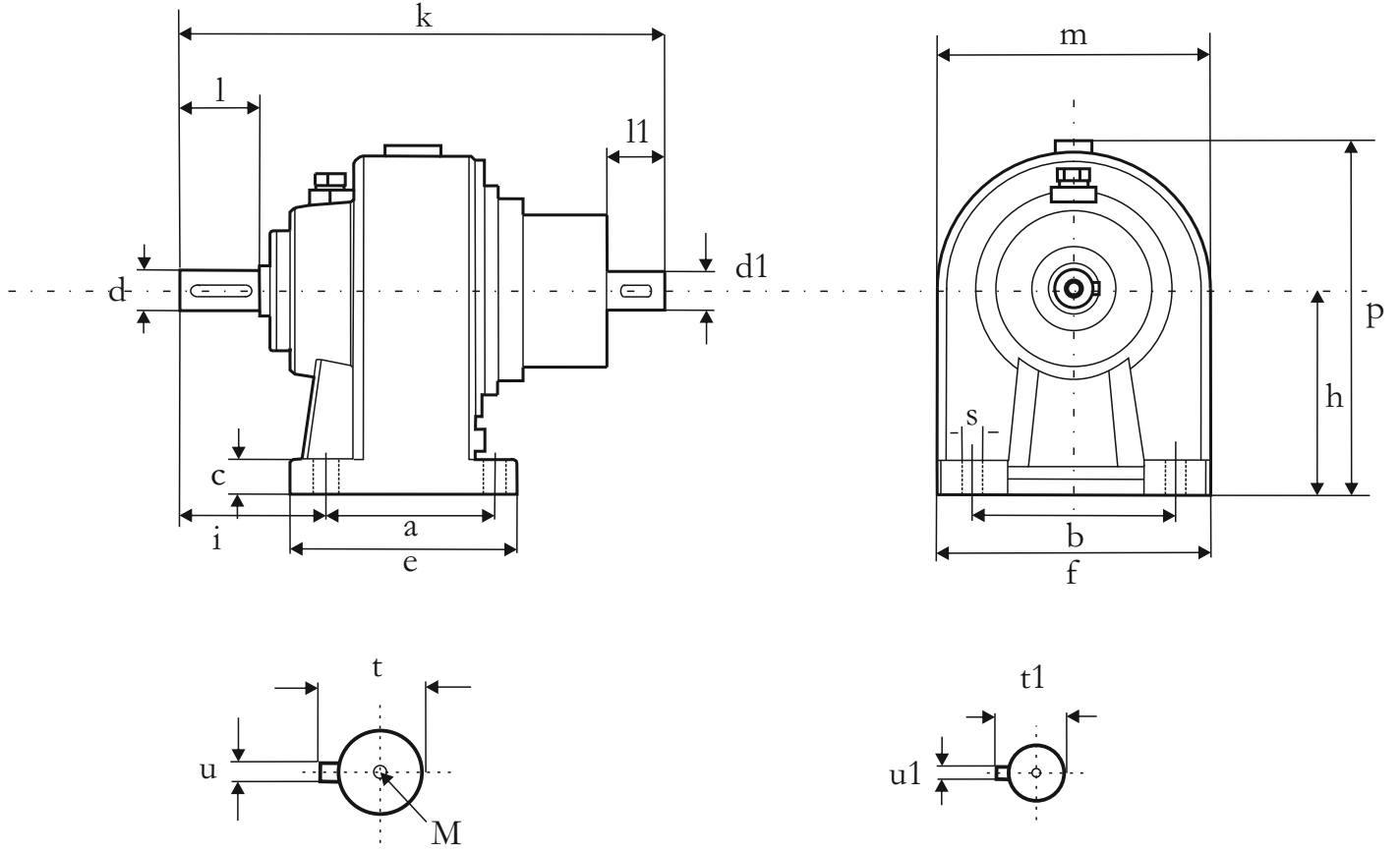
TB800-T

Çıkış Devri Output speeds n1 1400 d/dk	Çıkış Momenti Output Torque M2 (Nm)	Çevrim Oranı Ratio (İ:1)	Güvenilir Radyal Yük Per. Over Loads(N) (Pr-Pa) Giriş Input	Güvenilir Radyal Yük Per. Over Loads(N) (Pr1-Pa1) Çıkış Output	Max.Giriş Güçleri(KW) Max. input power	Ağırlık Weight (kg)	Ölçü Sayfası Dim. Page
					1400		
29,5	7122	49	26000-10000	1400-900	22	495	C36-C37
26,3	7353	55	26000-10000	1400-900	20		
25,8	7354	56	26000-10000	1400-900	19		
22,7	7353	64	26000-10000	1400-900	17		
20,5	7355	71	26000-10000	1400-900	15		
18,4	7354	79	26000-10000	1400-900	14		
16,4	7354	89	26000-10000	1400-900	12		
14,8	6710	99	31000-12600	1400-900	11		
13	7353	112	31000-12600	1400-900	10		
12,3	7352	118	31000-12600	1400-900	9		
10,9	7350	133	31000-12600	1400-900	8		
10,1	7356	145	31000-12600	1400-900	7		
9	7353	163	31000-12600	1400-900	6		
8,5	7359	171	31000-12600	1400-900	6		
7,7	7354	189	31000-12600	1400-900	5		
7	7353	210	31000-12600	1400-900	5		
6,3	7351	233	31000-12600	1400-900	4		
5,6	7350	262	31000-12600	1400-900	4		
5	7353	293	31000-12600	1400-900	3		
4,4	7357	329	31000-12600	1400-900	3		
4,2	7344	348	31000-12600	1400-900	3		
3,7	7356	392	31000-12600	1400-900	2		
3,4	7359	426	31000-12600	1400-900	2		
3,1	7362	479	31000-12600	1400-900	2		



TB01 AT

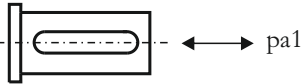
HELİSEL DİŞLİ İKİ KADEMELİ W(T) TİPİ REDÜKTÖRLER
Helical geared W (T) type units, for double reduction



a	b	c	e	f	s	i	h	p	m	l	d	d1	k	l1
85	105	15	110	135	8,5	68	102	170	135	40	20	14	245	30

t	u	M	t1	u1
22,5	6	M6	16	5

pr1



Redüktörün giriş miline yüklenebilecek maksimum radyal ve aksenal yükler.
Radial and axial loads on the input shaft

Yük
Load

Pr1 (N)	650
Pa1(N)	400

Giriş Devir Sayısı 1400
Output speed n2

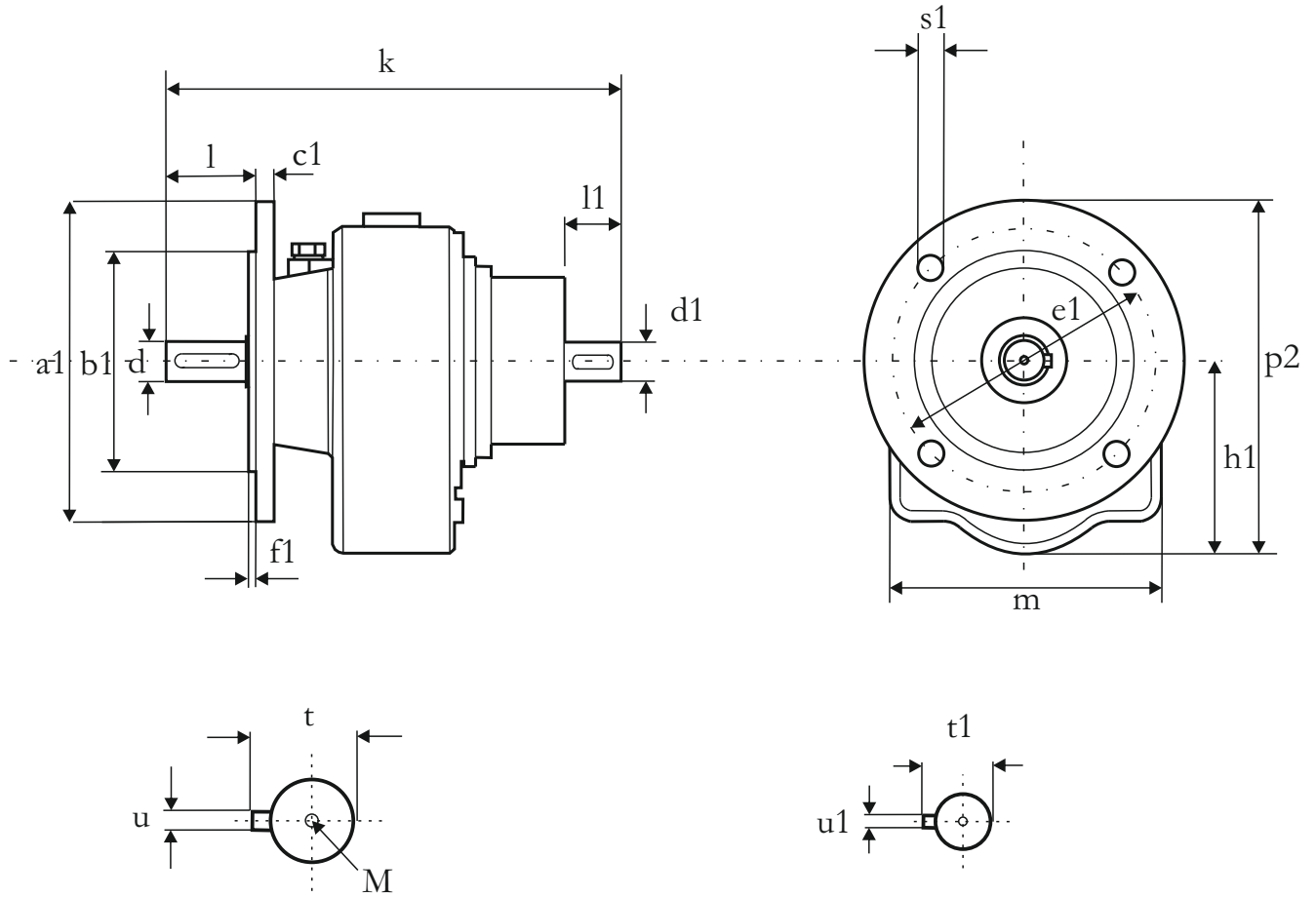
MİL ÇAP TOLERANSLARI
0-50 mm ISO K6
50mm üstü ISO J6

Shaft diameter tolerances
0-50 mm ISO K6
Up 50 mm ISO J6



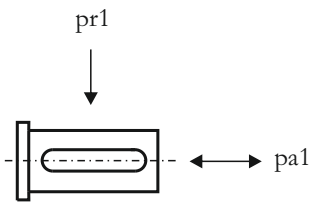
TB01 FT

HELİSEL DİŞLİ İKİ KADEMELİ W(T) TİPİ REDÜKTÖRLER
Helical geared W (T) type units, for double reduction



a1	b1	c1	e1	f1	s1	h1	p2	m	l	d	d1	k	l1
160	110	10	130	3,5	9	102	178	135	40	20	14	245	30

t	u	M	t1	u1
22,5	6	M6	16	5



Redüktörün giriş miline yüklenebilecek maksimum radyal ve aksel yükler.
Radial and axial loads on the input shaft

Yük
Load

Pr1 (N)	650
Pa1(N)	400

Giriş Devir Sayısı 1400
Output speed n2

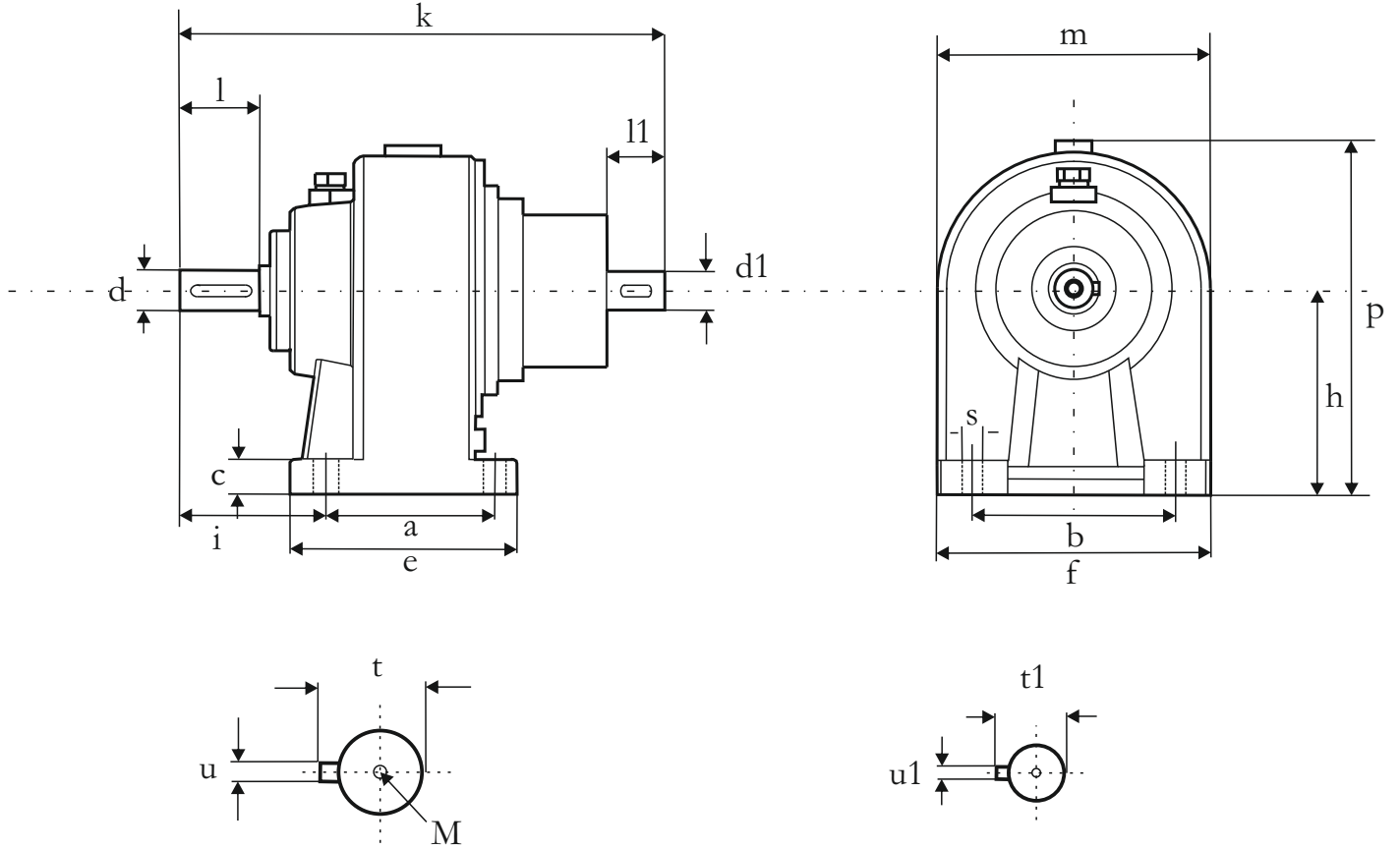
MİL ÇAP TOLERANSLARI
0-50 mm ISO K6
50mm üstü ISO J6

Shaft diameter tolerances
0-50 mm ISO K6
Up 50 mm ISO J6



TB20 AT

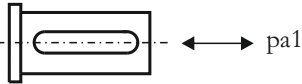
HELİSEL DİŞLİ İKİ KADEMELİ W(T) TİPİ REDÜKTÖRLER
Helical geared W (T) type units, for double reduction



a	b	c	e	f	s	i	h	p	m	l	d	d1	k	l1
100	130	13	125	155	10,5	94	125	200	150	50	25	19	313	40

t	u	M	t1	u1
28	8	M8	21,5	8

pr1



Redüktörün giriş miline yüklenebilecek maksimum radyal ve aksenal yükler.
Radial and axial loads on the input shaft

Yük
Load

Pr1 (N)	850
Pa1(N)	550

Giriş Devir Sayısı 1400
Output speed n2

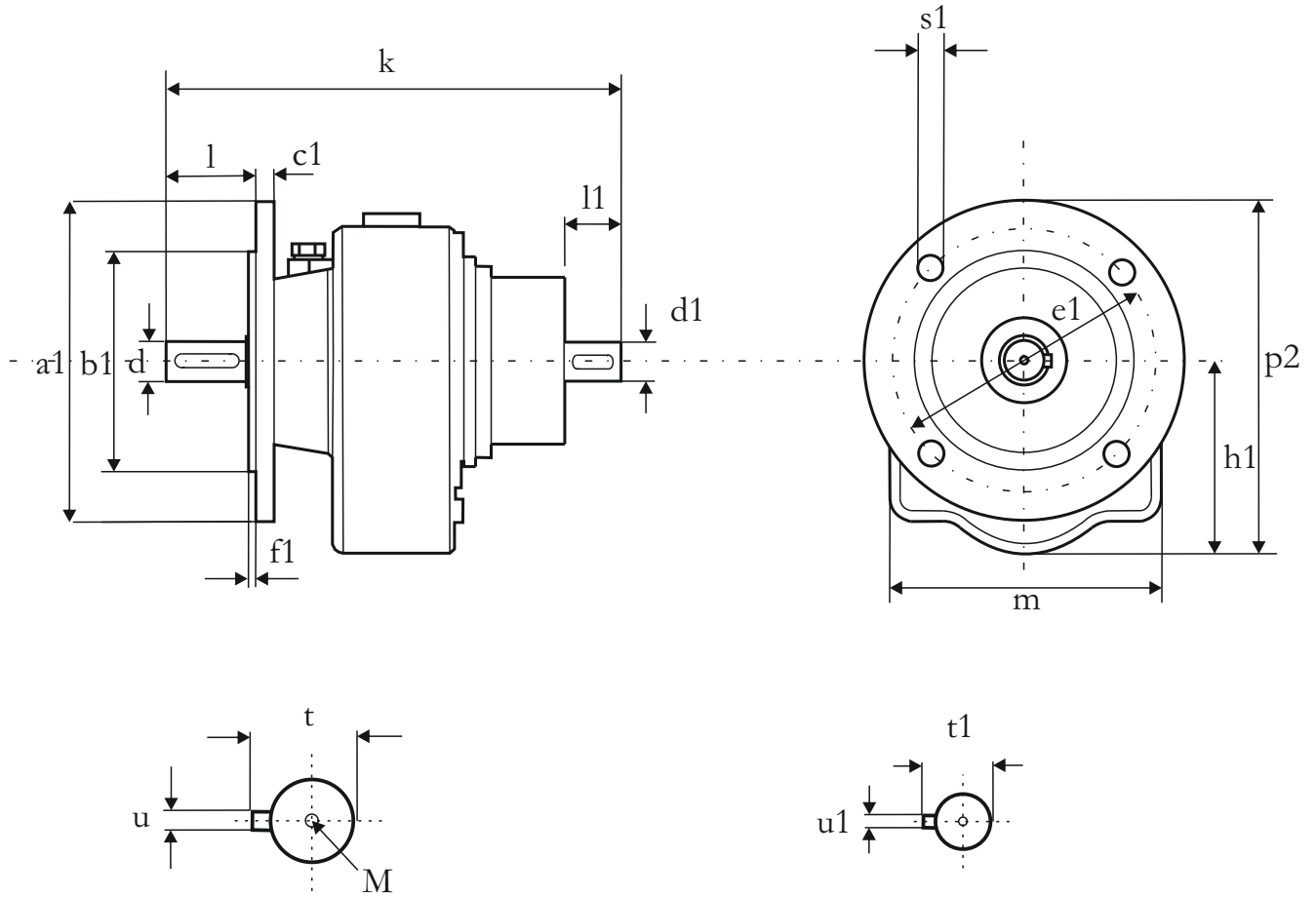
MİL ÇAP TOLERANSLARI
0-50 mm ISO K6
50mm üstü ISO J6

Shaft diameter tolerances
0-50 mm ISO K6
Up 50 mm ISO J6



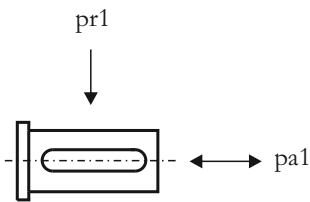
TB20 FT

HELİSEL DİŞLİ İKİ KADEMELİ W(T) TİPİ REDÜKTÖRLER
Helical geared W (T) type units, for double reduction



a1	b1	c1	e1	f1	s1	h1	p2	m	l	d	d1	k	l1
160	110	12	130	3,5	9	125	203	150	50	25	19	313	40

t	u	M	t1	u1
28	8	M8	21,5	6



Redüktörün giriş miline yüklenebilecek maksimum radyal ve aksel yükler.
Radial and axial loads on the input shaft

Yük
Load

Pr1 (N)	850
Pa1(N)	550

Giriş Devir Sayısı 1400
Output speed n2

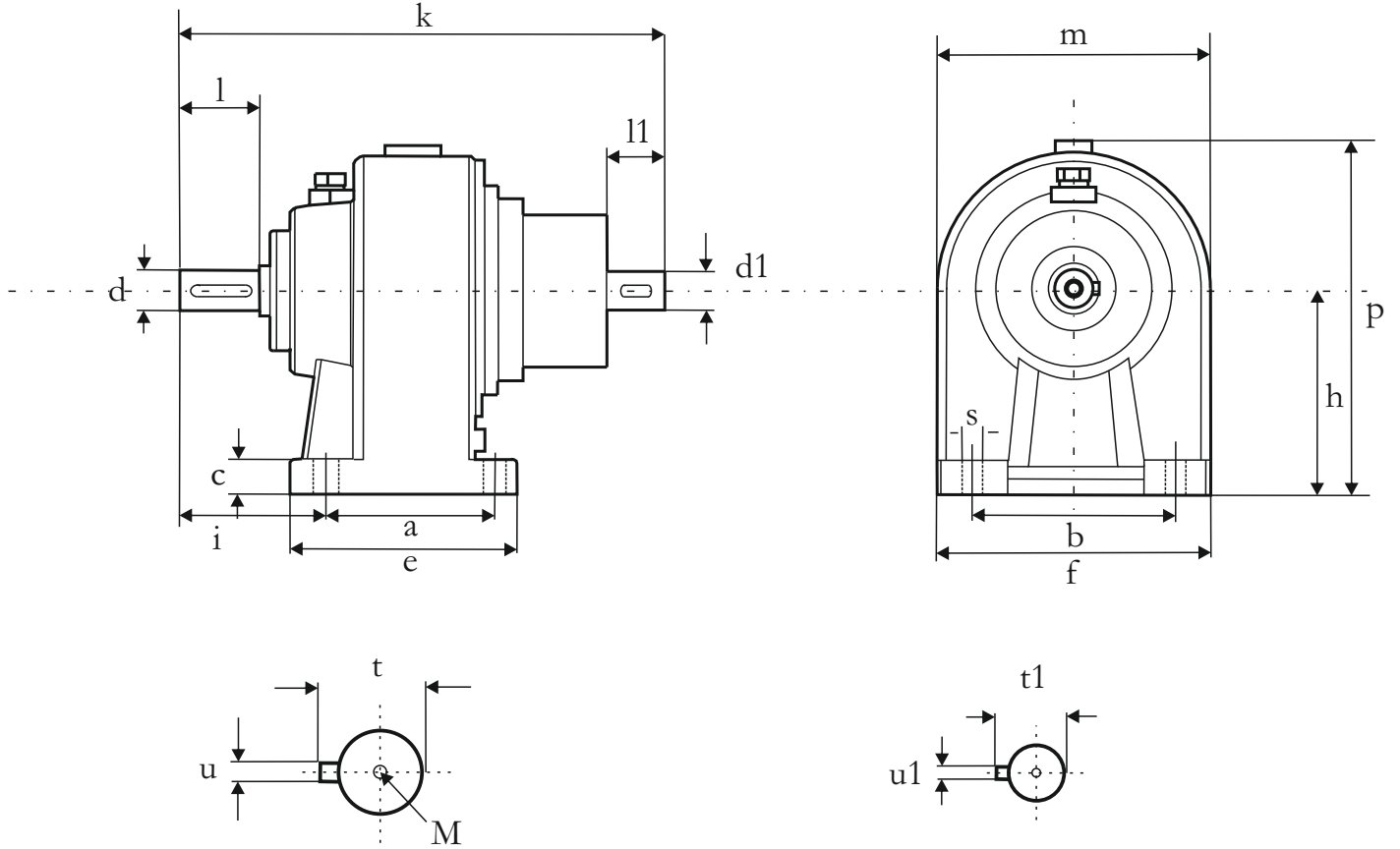
MİL ÇAP TOLERANSLARI
0-50 mm ISO K6
50mm üstü ISO J6

Shaft diameter tolerances
0-50 mm ISO K6
Up 50 mm ISO J6



TB30 AT

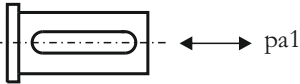
HELİSEL DİŞLİ İKİ KADEMELİ W(T) TİPİ REDÜKTÖRLER
Helical geared W (T) type units, for double reduction



a	b	c	e	f	s	i	h	p	m	l	d	d1	k	l1
90	185	20	125	210	13	86	155	240	170	70	35	24	350	50

t	u	M	t1	u1
38	10	M10	27	10

pr1



Redüktörün giriş miline yüklenebilecek maksimum radyal ve aksenal yükler.
Radial and axial loads on the input shaft

Yük
Load

Pr1 (N)	850
Pa1(N)	550

Giriş Devir Sayısı 1400
Output speed n2

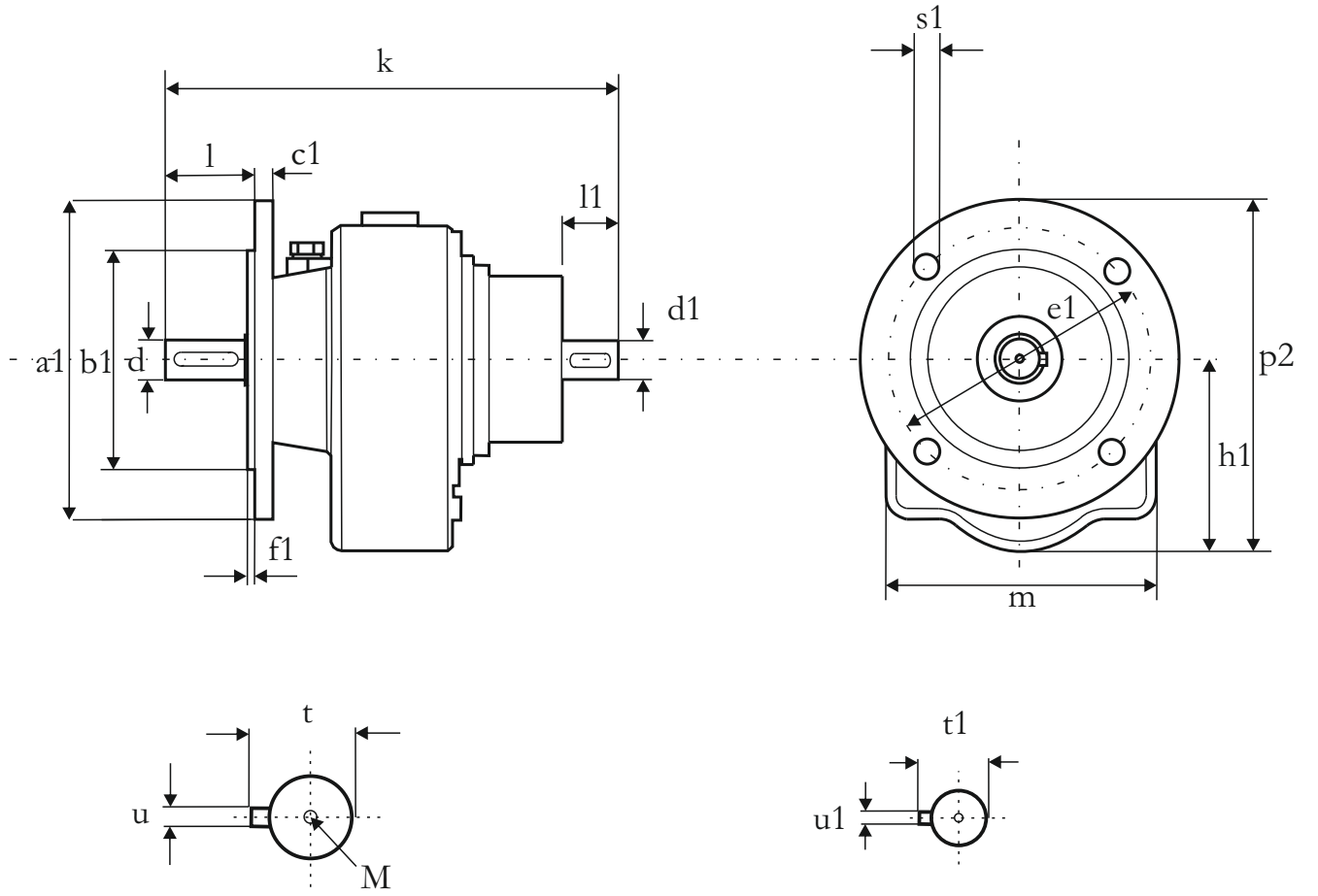
MİL ÇAP TOLERANSLARI
0-50 mm ISO K6
50mm üstü ISO J6

Shaft diameter tolerances
0-50 mm ISO K6
Up 50 mm ISO J6



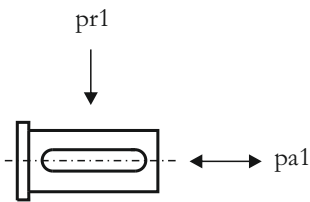
TB30 FT

HELİSEL DİŞLİ İKİ KADEMELİ W(T) TİPİ REDÜKTÖRLER
Helical geared W (T) type units, for double reduction



a1	b1	c1	e1	f1	s1	h1	p2	m	l	d	d1	k	l1
200	130	12	165	3,5	9	155	253	170	70	35	24	350	50

t	u	M	t1	u1
38	10	M10	27	8



Redüktörün giriş miline yüklenebilecek maksimum radyal ve aksenal yükler.
Radial and axial loads on the input shaft

Yük
Load

Pr1 (N)	850
Pa1(N)	550

Giriş Devir Sayısı 1400
Output speed n2

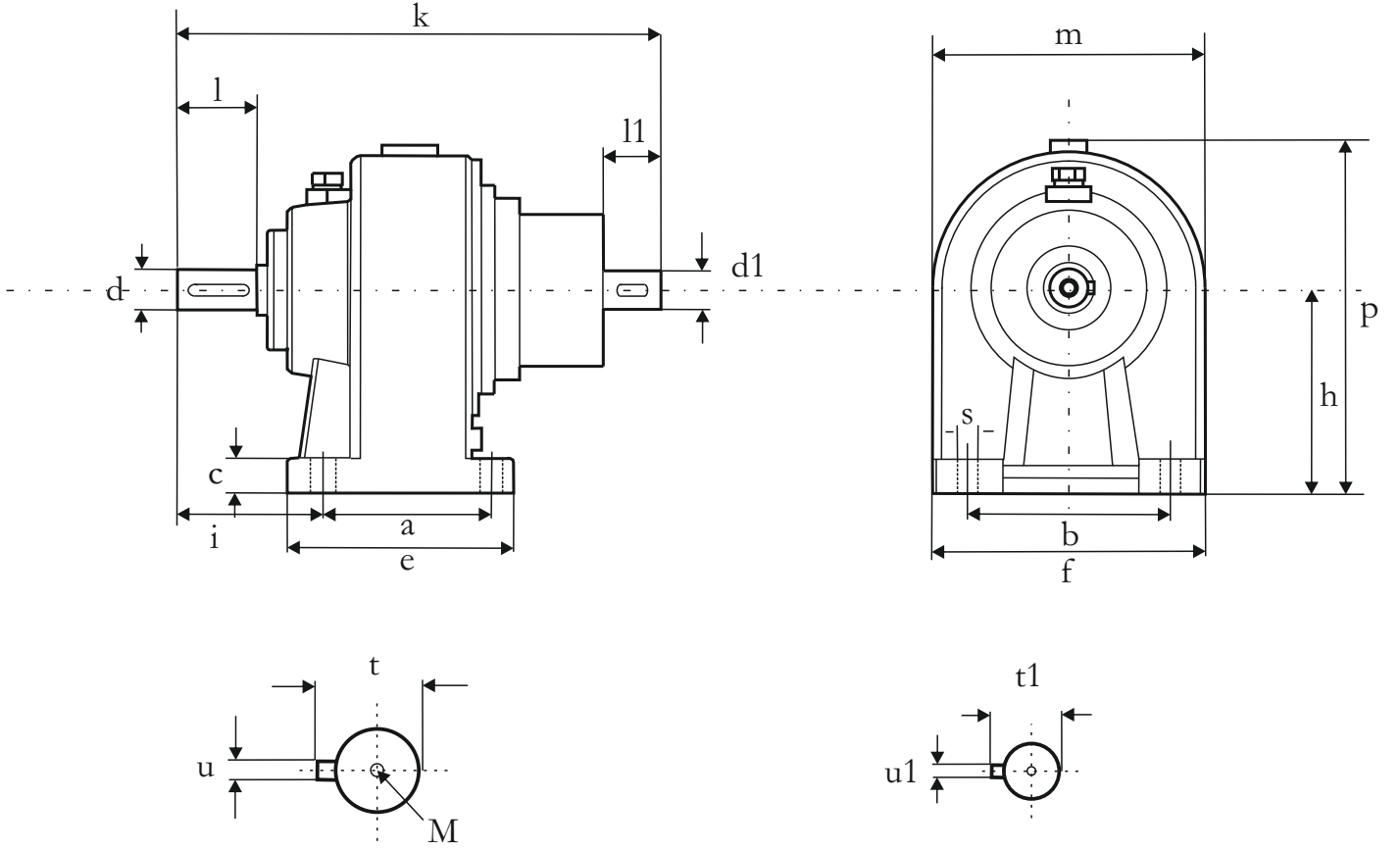
MİL ÇAP TOLERANSLARI
0-50 mm ISO K6
50mm üstü ISO J6

Shaft diameter tolerances
0-50 mm ISO K6
Up 50 mm ISO J6



TB33 AT

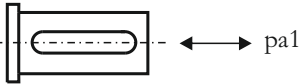
HELİSEL DİŞLİ İKİ KADEMELİ W(T) TİPİ REDÜKTÖRLER
Helical geared W (T) type units, for double reduction



a	b	c	e	f	s	i	h	p	m	l	d	d1	k	l1
134	175	25	165	215	13	120	175	275	200	80	40	32	437	70

t	u	M	t1	u1
43	14	M12	35	10

pr1



Redüktörün giriş miline yüklenebilecek maksimum radyal ve aksenal yükler.
Radial and axial loads on the input shaft

Yük
Load

Pr1 (N)	1100
Pa1(N)	700

Giriş Devir Sayısı 1400
Output speed n2

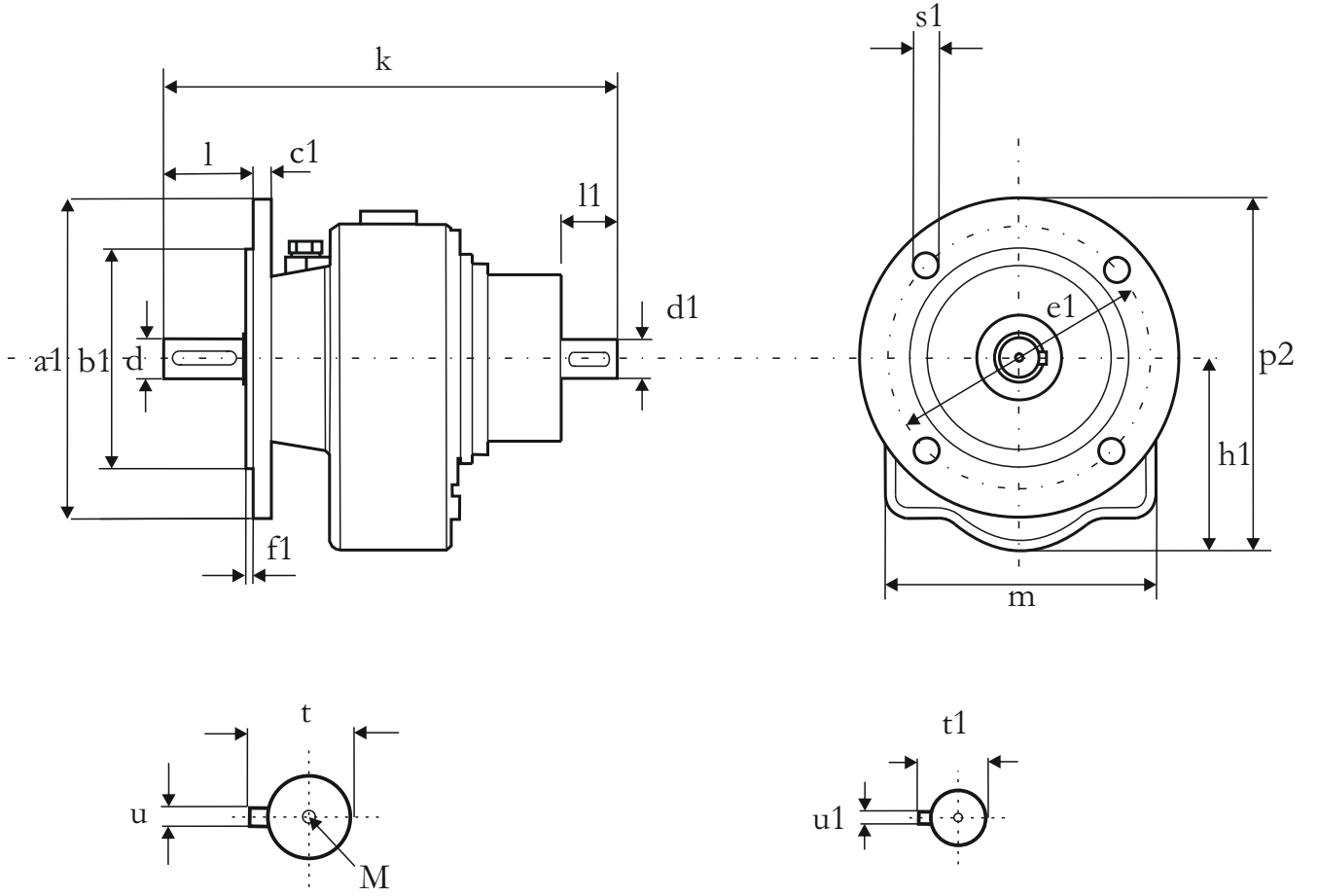
MİL ÇAP TOLERANSLARI
0-50 mm ISO K6
50mm üstü ISO J6

Shaft diameter tolerances
0-50 mm ISO K6
Up 50 mm ISO J6



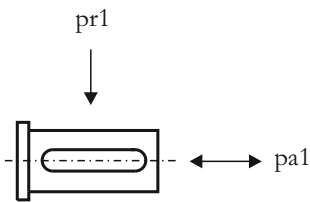
TB33 FT

HELİSEL DİŞLİ İKİ KADEMELİ W(T) TİPİ REDÜKTÖRLER
Helical geared W (T) type units, for double reduction



a1	b1	c1	e1	f1	s1	h1	p2	m	l	d	d1	k	l1
200	130	12	165	3,5	9	175	273	200	80	40	32	437	70

t	u	M	t1	u1
43	14	M12	35	10



Redüktörün giriş miline yüklenebilecek maksimum radyal ve aksel yükler.
Radial and axial loads on the input shaft

Yük
Load

Pr1 (N)	1100
Pa1(N)	700

Giriş Devir Sayısı 1400
Output speed n2

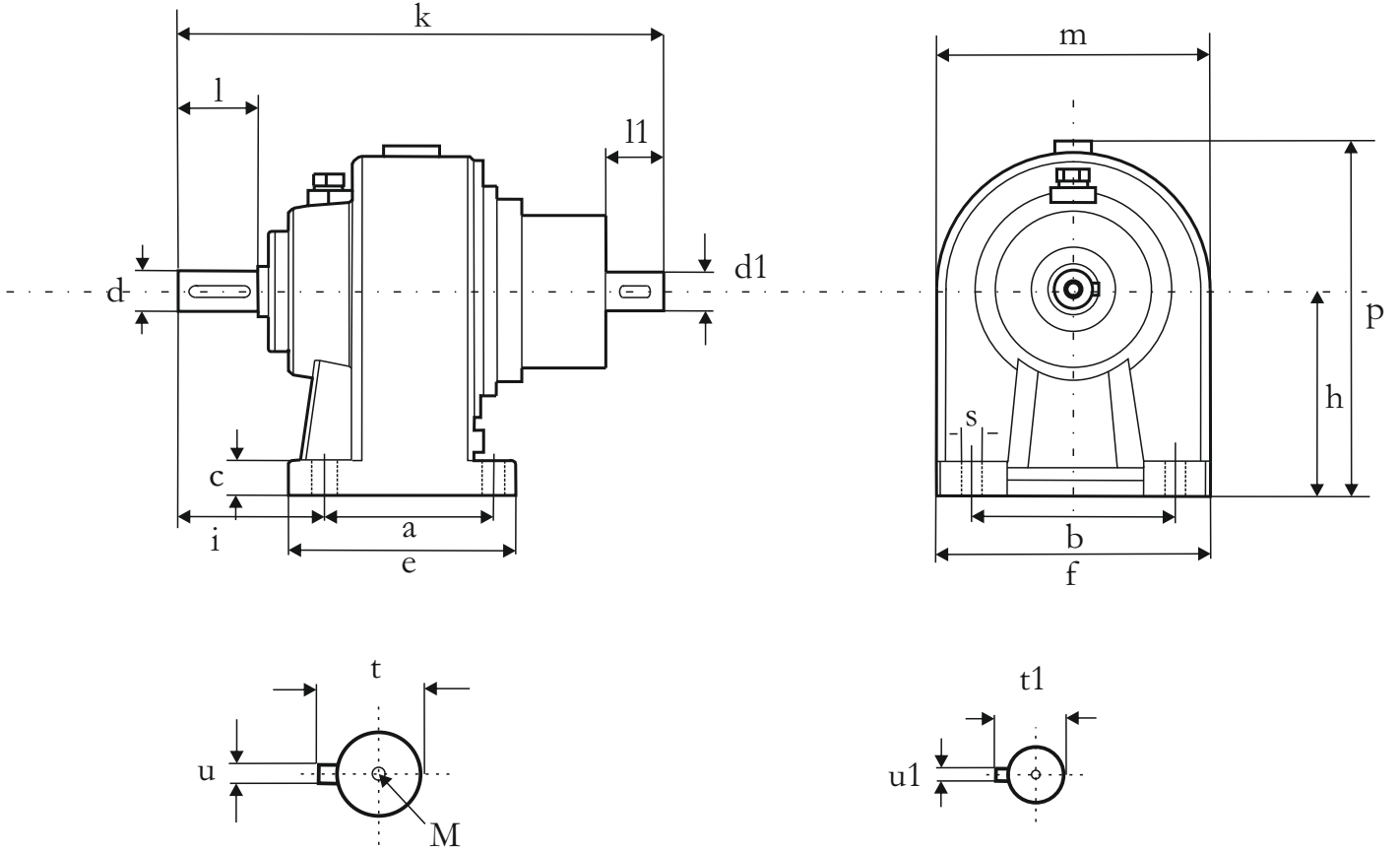
MİL ÇAP TOLERANSLARI
0-50 mm ISO K6
50mm üstü ISO J6

Shaft diameter tolerances
0-50 mm ISO K6
Up 50 mm ISO J6



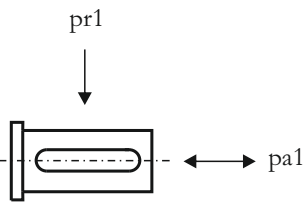
TB50 AT

HELİSEL DİŞLİ İKİ KADEMELİ W(T) TİPİ REDÜKTÖRLER
Helical geared W (T) type units, for double reduction



a	b	c	e	f	s	i	h	p	m	l	d	d1	k	l1
190	260	35	230	314	18	134	250	375	250	100	50	38	546	80

t	u	M	t1	u1
53,5	16	M14	41	10



Redüktörün giriş miline yüklenebilecek maksimum radyal ve aksenal yükler.
Radial and axial loads on the input shaft

Yük
Load

Pr1 (N)	1250
Pa1(N)	800

Giriş Devir Sayısı 1400
Output speed n2

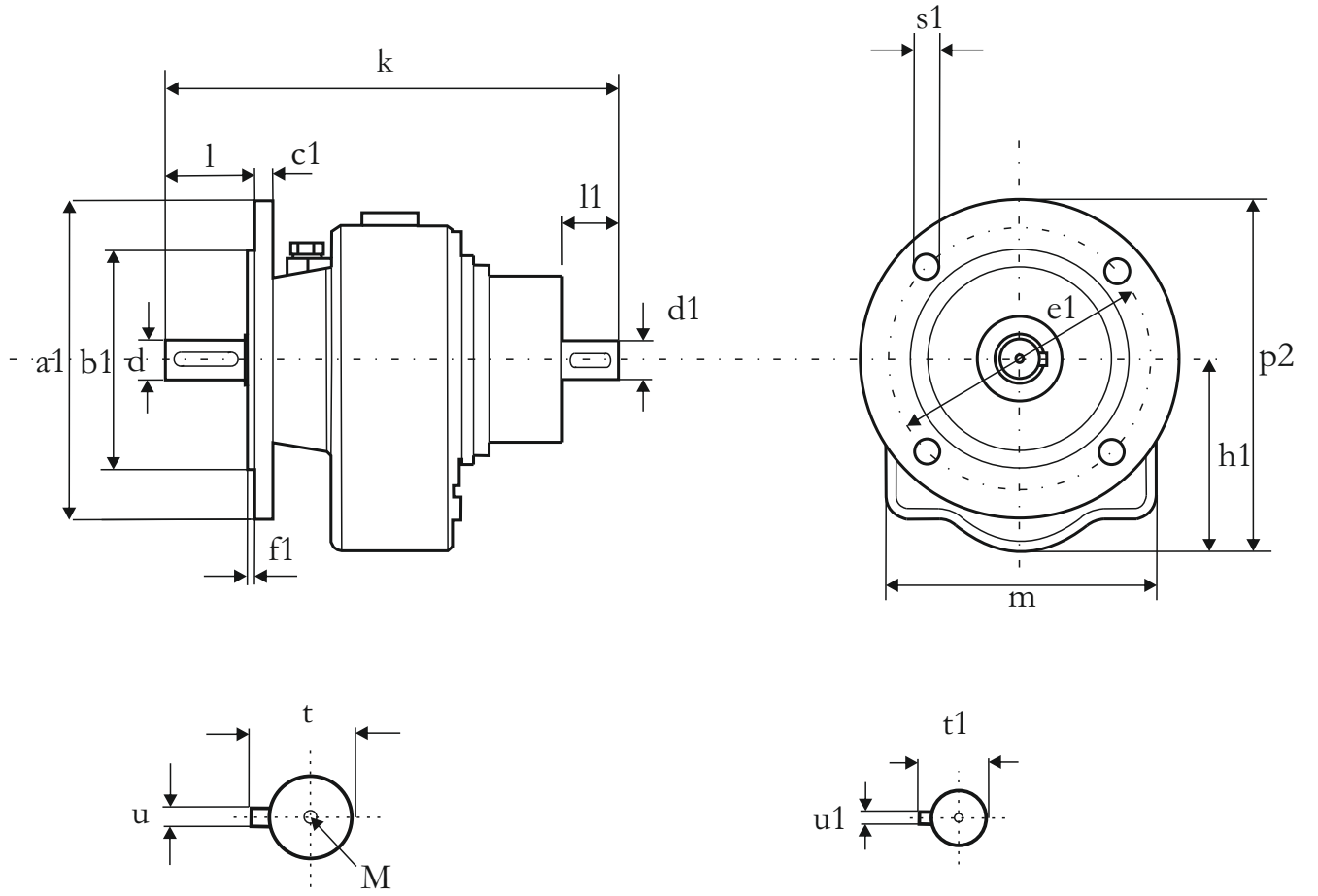
MİL ÇAP TOLERANSLARI
0-50 mm ISO K6
50mm üstü ISO J6

Shaft diameter tolerances
0-50 mm ISO K6
Up 50 mm ISO J6



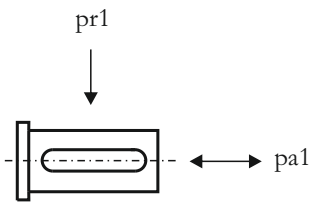
TB50 FT

HELİSEL DİŞLİ İKİ KADEMELİ W(T) TİPİ REDÜKTÖRLER
Helical geared W (T) type units, for double reduction



a1	b1	c1	e1	f1	s1	h1	p2	m	l	d	d1	k	l1
250	180	16	215	4	14	250	395	250	100	50	38	546	80

t	u	M	t1	u1
53,5	16	M14	41	10



Redüktörün giriş miline yüklenebilecek maksimum radyal ve aksel yükler.
Radial and axial loads on the input shaft

Yük
Load

Pr1 (N)	1250
Pa1(N)	800

Giriş Devir Sayısı 1400
Output speed n2

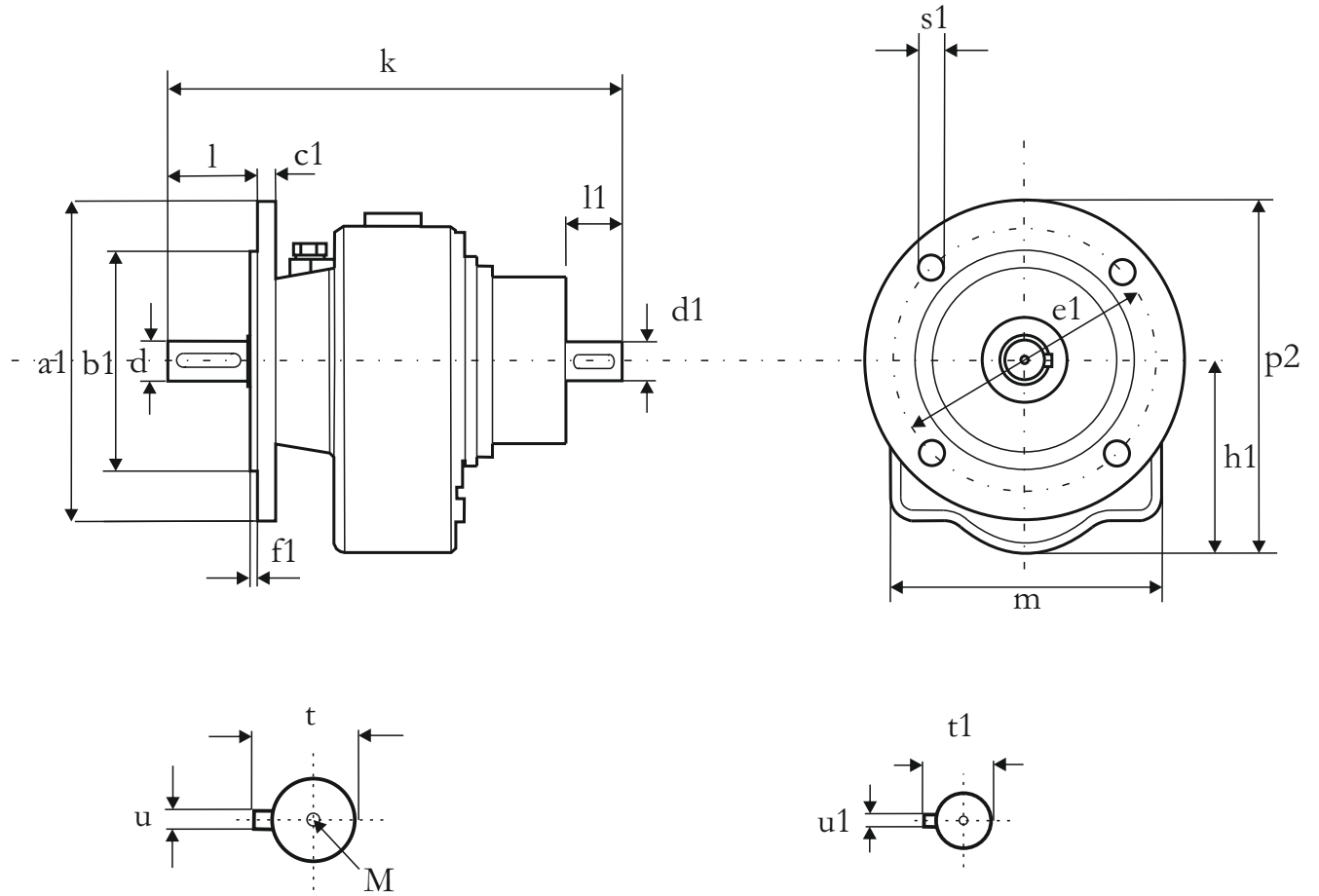
MİL ÇAP TOLERANSLARI
0-50 mm ISO K6
50mm üstü ISO J6

Shaft diameter tolerances
0-50 mm ISO K6
Up 50 mm ISO J6



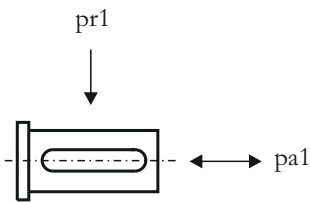
TB50 FT_W

HELİSEL DİŞLİ İKİ KADEMELİ W(T) TİPİ REDÜKTÖRLER
Helical geared W (T) type units, for double reduction



a1	b1	c1	e1	f1	s1	h1	p2	m	l	d	d1	k	l1
300	230	20	265	4	14	250	395	250	100	50	38	546	80

t	u	M	t1	u1
53,5	16	M14	41	10



Redüktörün giriş miline yüklenebilecek maksimum radyal ve aksel yükler.
Radial and axial loads on the input shaft

Yük
Load

Pr1 (N)	1250
Pa1(N)	800

Giriş Devir Sayısı 1400
Output speed n2

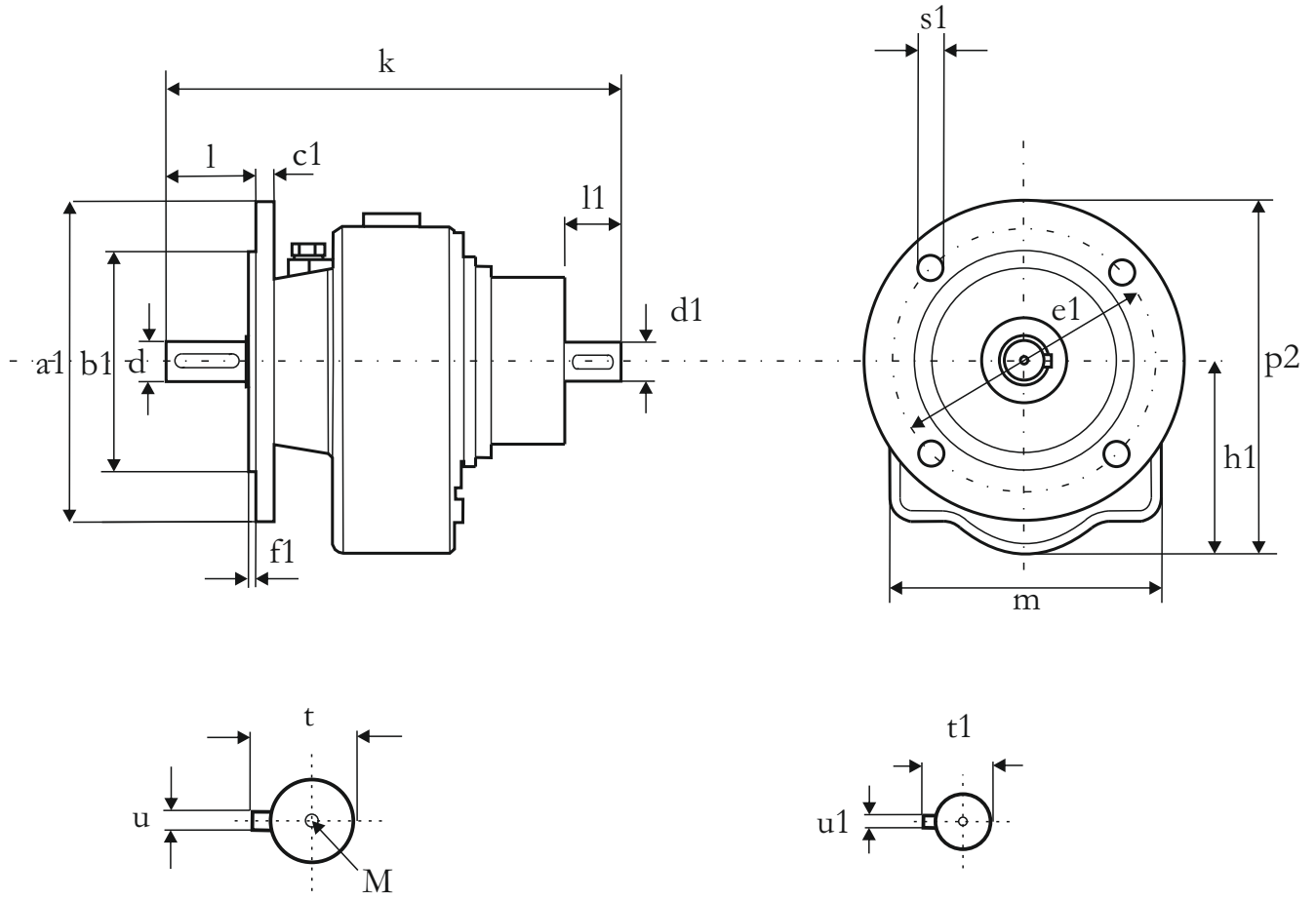
MİL ÇAP TOLERANSLARI
0-50 mm ISO K6
50mm üstü ISO J6

Shaft diameter tolerances
0-50 mm ISO K6
Up 50 mm ISO J6



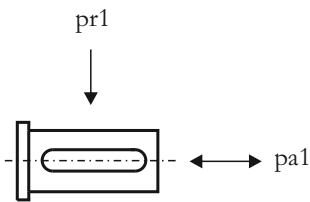
TB50 FT_{V-W}

HELİSEL DİŞLİ İKİ KADEMELİ W(T) TİPİ REDÜKTÖRLER
Helical geared W (T) type units, for double reduction



a1	b1	c1	e1	f1	s1	h1	p2	m	l	d	d1	k	l1
350	250	20	300	5	18	250	420	250	100	50	38	546	80

t	u	M	t1	u1
53,5	16	M14	41	10



Redüktörün giriş miline yüklenebilecek maksimum radyal ve aksel yükler.
Radial and axial loads on the input shaft

Yük
Load

Pr1 (N)	1250
Pa1(N)	800

Giriş Devir Sayısı 1400
Output speed n2

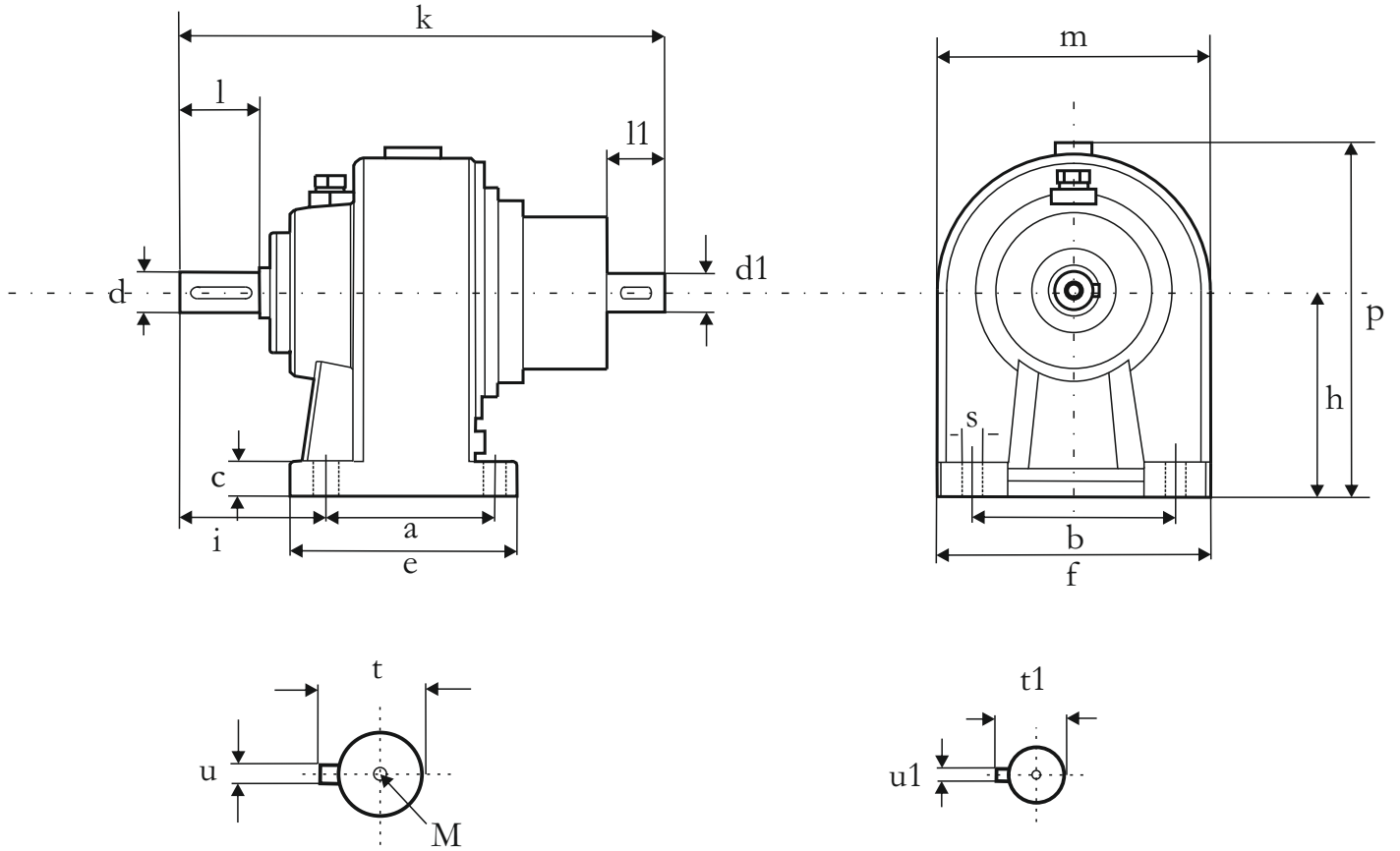
MİL ÇAP TOLERANSLARI
0-50 mm ISO K6
50mm üstü ISO J6

Shaft diameter tolerances
0-50 mm ISO K6
Up 50 mm ISO J6



TB60 AT

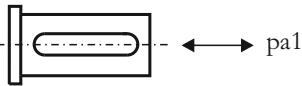
HELİSEL DİŞLİ İKİ KADEMELİ W(T) TİPİ REDÜKTÖRLER
Helical geared W (T) type units, for double reduction



a	b	c	e	f	s	i	h	p	m	l	d	d1	k	l1
240	325	45	300	400	22	169	280	430	300	130	65	42	659	85

t	u	M	t1	u1
69	18	M16	45	12

pr1



Redüktörün giriş miline yüklenebilecek maksimum radyal ve aksenal yükler.
Radial and axial loads on the input shaft

Yük
Load

Pr1 (N)	1400
Pa1(N)	900

Giriş Devir Sayısı 1400
Output speed n2

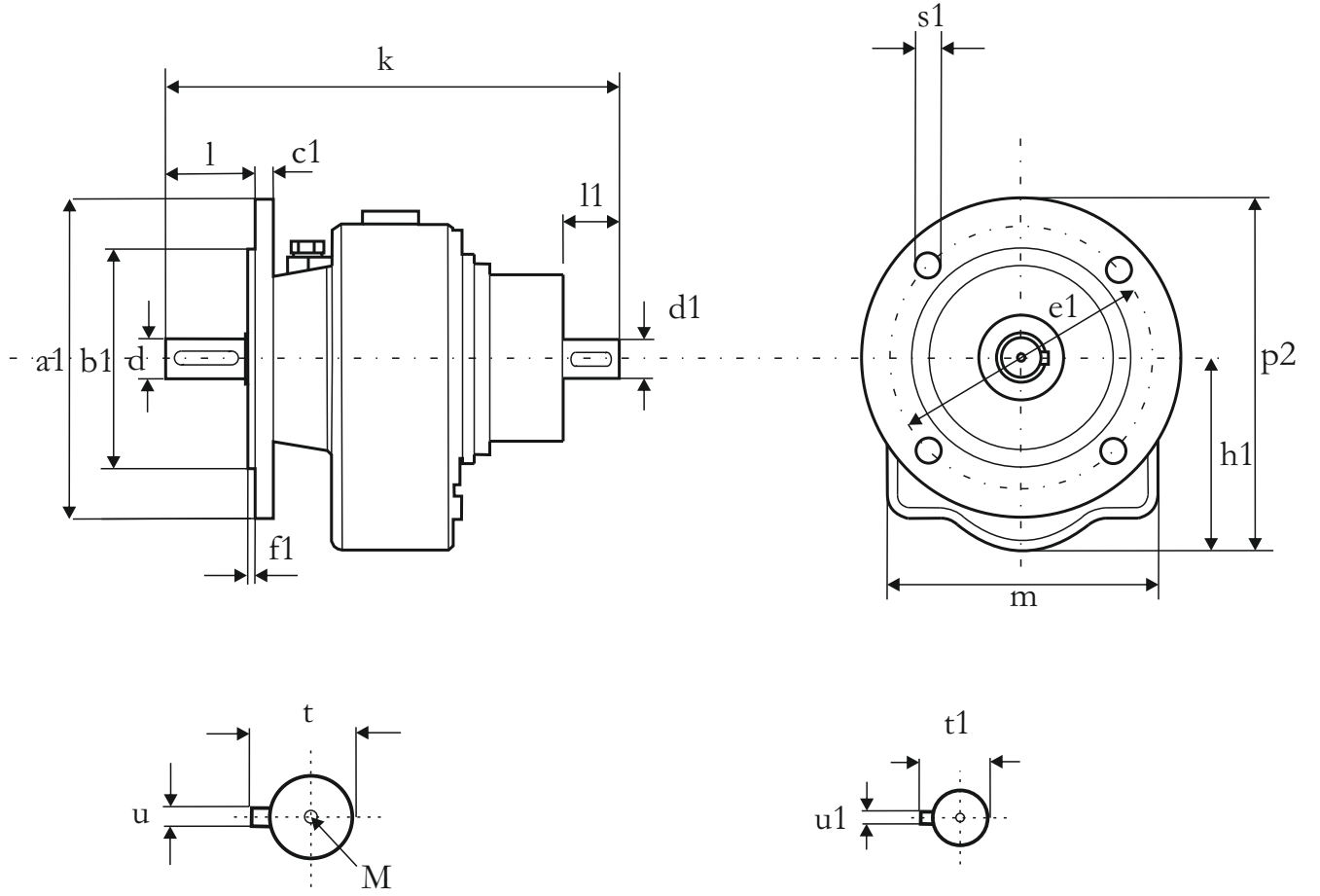
MİL ÇAP TOLERANSLARI
0-50 mm ISO K6
50mm üstü ISO J6

Shaft diameter tolerances
0-50 mm ISO K6
Up 50 mm ISO J6



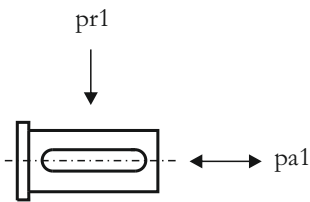
TB60 FT_W

HELİSEL DİŞLİ İKİ KADEMELİ W(T) TİPİ REDÜKTÖRLER
Helical geared W (T) type units, for double reduction



a1	b1	c1	e1	f1	s1	h1	p2	m	l	d	d1	k	l1
300	230	14	265	3,5	11	280	425	300	130	65	42	659	85

t	u	M	t1	u1
69	18	M16	45	12



Redüktörün giriş miline yüklenebilecek maksimum radyal ve aksel yükler.
Radial and axial loads on the input shaft

Yük
Load

Pr1 (N)	1400
Pa1(N)	900

Giriş Devir Sayısı 1400
Output speed n2

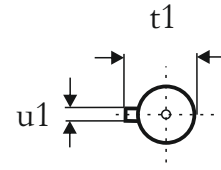
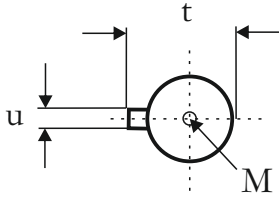
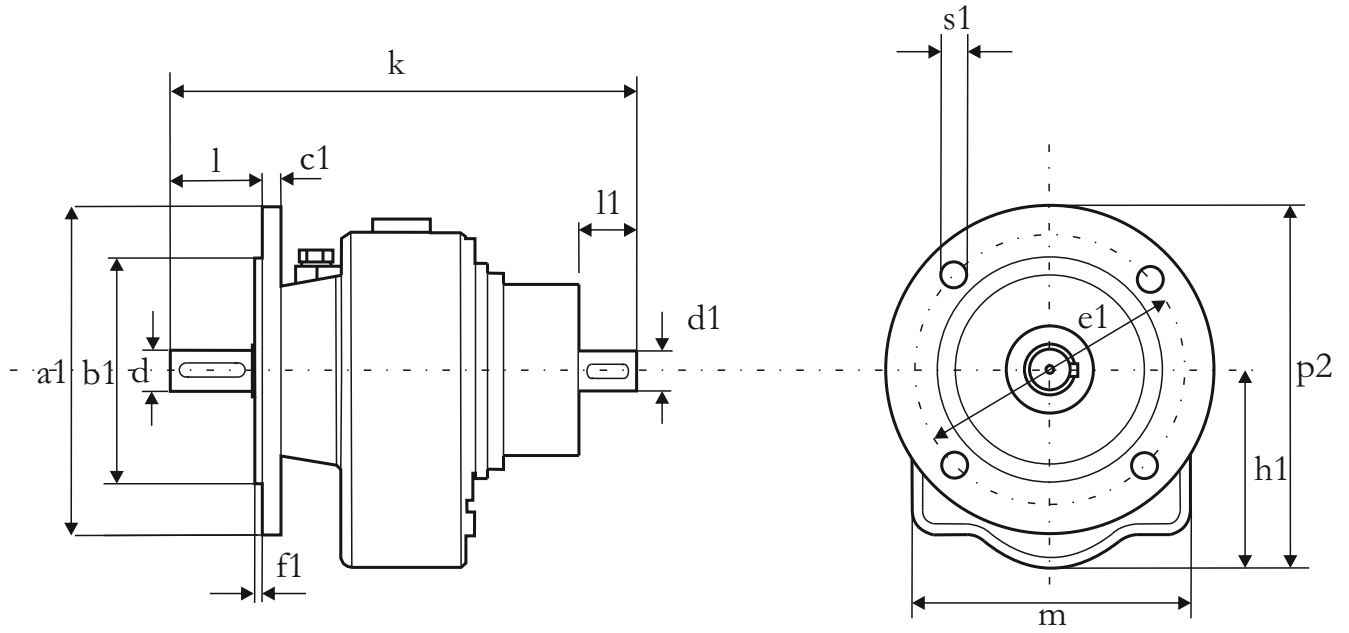
MİL ÇAP TOLERANSLARI
0-50 mm ISO K6
50mm üstü ISO J6

Shaft diameter tolerances
0-50 mm ISO K6
Up 50 mm ISO J6



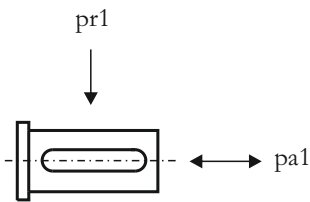
TB60 FT_{V-W}

HELİSEL DİŞLİ İKİ KADEMELİ W(T) TİPİ REDÜKTÖRLER
Helical geared W (T) type units, for double reduction



a1	b1	c1	e1	f1	s1	h1	p2	m	l	d	d1	k	l1
350	250	20	300	4	14	280	450	300	130	65	42	659	85

t	u	M	t1	u1
69	18	M16	45	12



Redüktörün giriş miline yüklenebilecek maksimum radyal ve aksel yükler.
Radial and axial loads on the input shaft

Yük
Load

Pr1 (N)	1400
Pa1(N)	900

Giriş Devir Sayısı 1400
Output speed n2

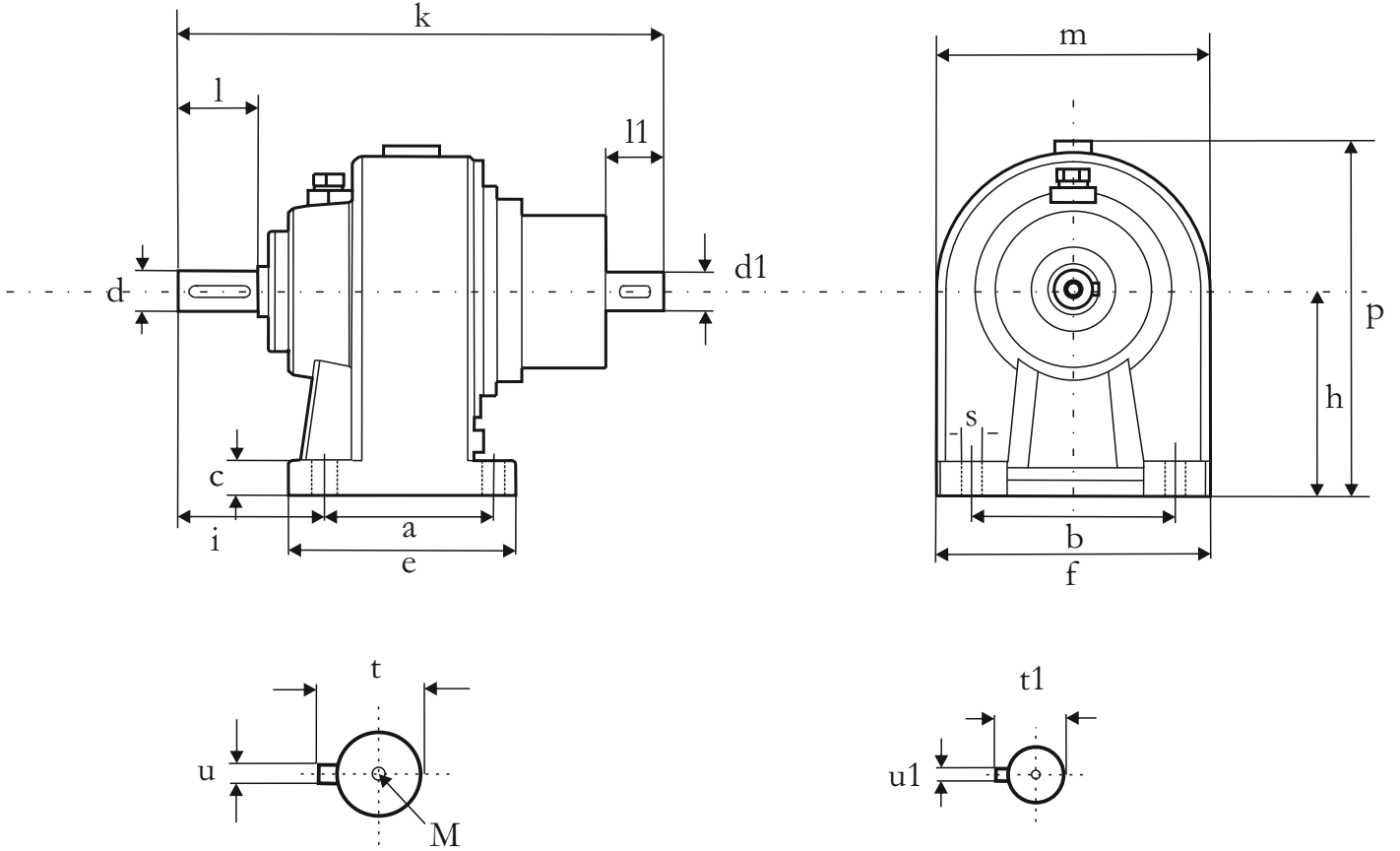
MİL ÇAP TOLERANSLARI
0-50 mm ISO K6
50mm üstü ISO J6

Shaft diameter tolerances
0-50 mm ISO K6
Up 50 mm ISO J6



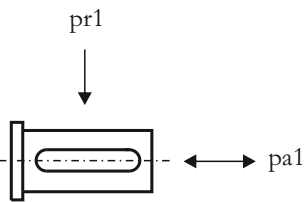
TB70 AT

HELİSEL DİŞLİ İKİ KADEMELİ W(T) TİPİ REDÜKTÖRLER
Helical geared W (T) type units, for double reduction



a	b	c	e	f	s	i	h	p	m	l	d	d1	k	l1
300	360	55	370	450	26	185	315	490	350	140	75	60	829	140

t	u	M	t1	u1
79,5	20	M16	64	14



Redüktörün giriş miline yüklenebilecek maksimum radyal ve aksenal yükler.
Radial and axial loads on the input shaft

Yük
Load

Pr1 (N)	1800
Pa1(N)	1000

Giriş Devir Sayısı 1400
Output speed n2

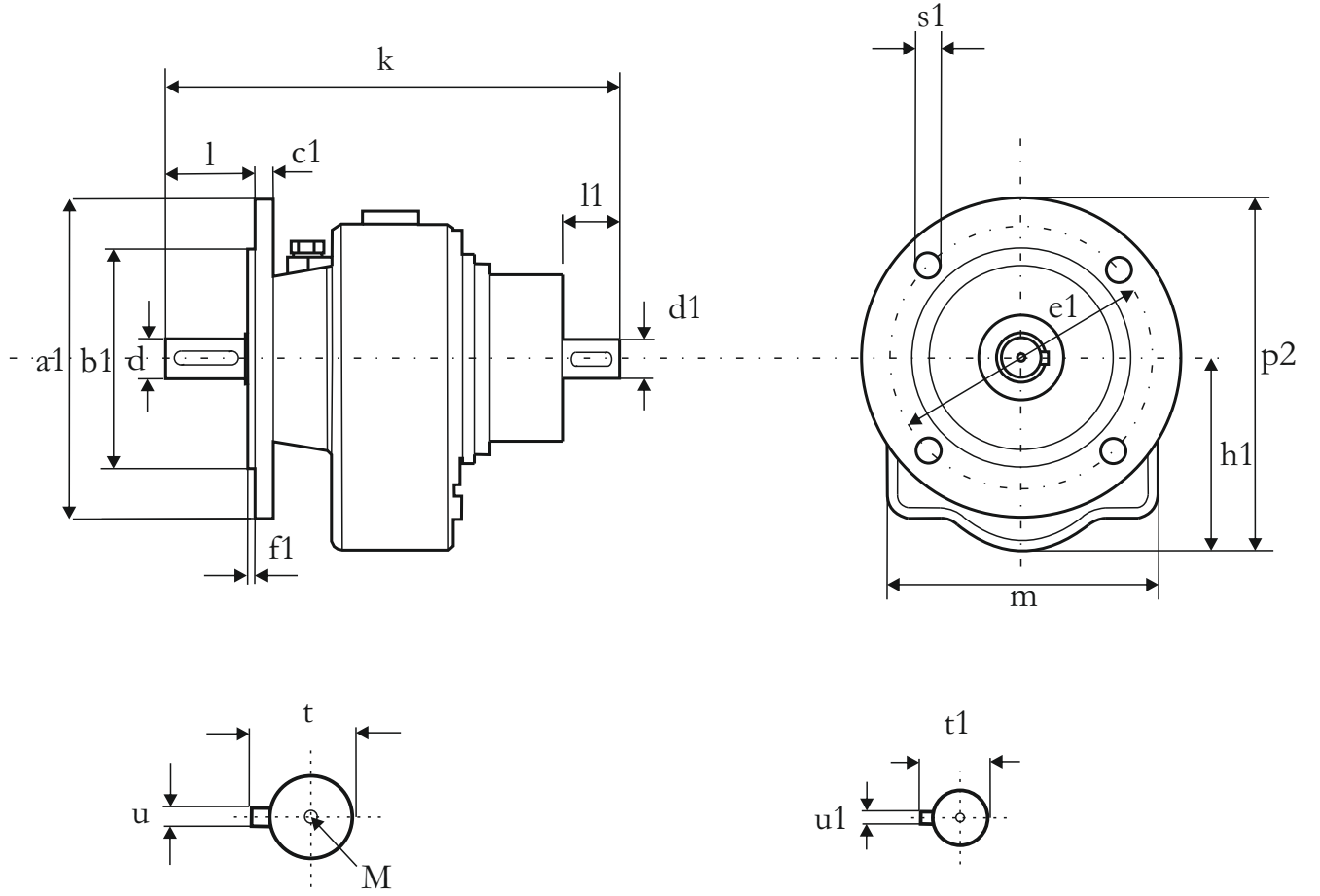
MİL ÇAP TOLERANSLARI
0-50 mm ISO K6
50mm üstü ISO J6

Shaft diameter tolerances
0-50 mm ISO K6
Up 50 mm ISO J6



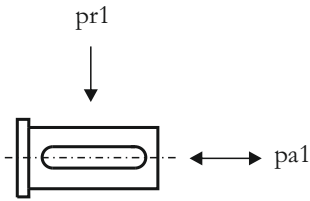
TB70 FT_W

HELİSEL DİŞLİ İKİ KADEMELİ W(T) TİPİ REDÜKTÖRLER
Helical geared W (T) type units, for double reduction



a1	b1	c1	e1	f1	s1	h1	p2	m	l	d	d1	k	l1
300	230	20	265	4	14	315	450	350	140	75	60	829	140

t	u	M	t1	u1
79,5	20	M16	64	14



Redüktörün giriş miline yüklenebilecek maksimum radyal ve aksel yükler.
Radial and axial loads on the input shaft

Yük
Load

Pr1 (N)	1800
Pa1(N)	1000

Giriş Devir Sayısı 1400
Output speed n2

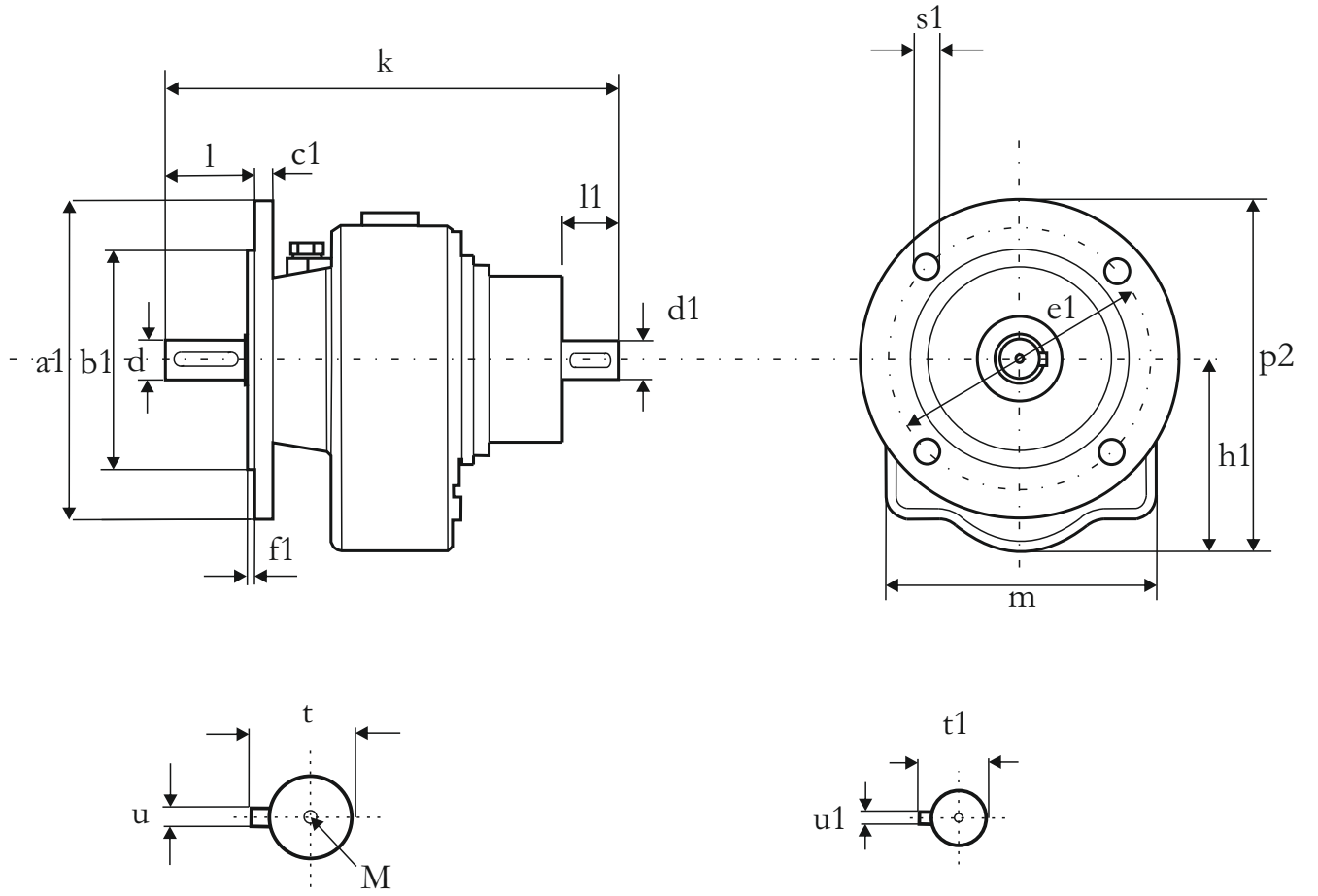
MİL ÇAP TOLERANSLARI
0-50 mm ISO K6
50mm üstü ISO J6

Shaft diameter tolerances
0-50 mm ISO K6
Up 50 mm ISO J6



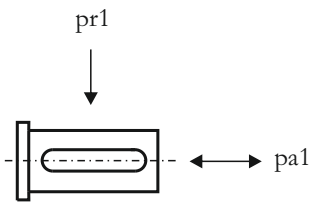
TB70 FT_{V-W}

HELİSEL DİŞLİ İKİ KADEMELİ W(T) TİPİ REDÜKTÖRLER
Helical geared W (T) type units, for double reduction



a1	b1	c1	e1	f1	s1	h1	p2	m	l	d	d1	k	l1
350	250	22	300	5	14	315	475	350	140	75	60	829	140

t	u	M	t1	u1
79,5	20	M16	64	14



Redüktörün giriş miline yüklenebilecek maksimum radyal ve aksel yükler.
Radial and axial loads on the input shaft

Yük
Load

Pr1 (N)	1800
Pa1(N)	1000

Giriş Devir Sayısı 1400
Output speed n2

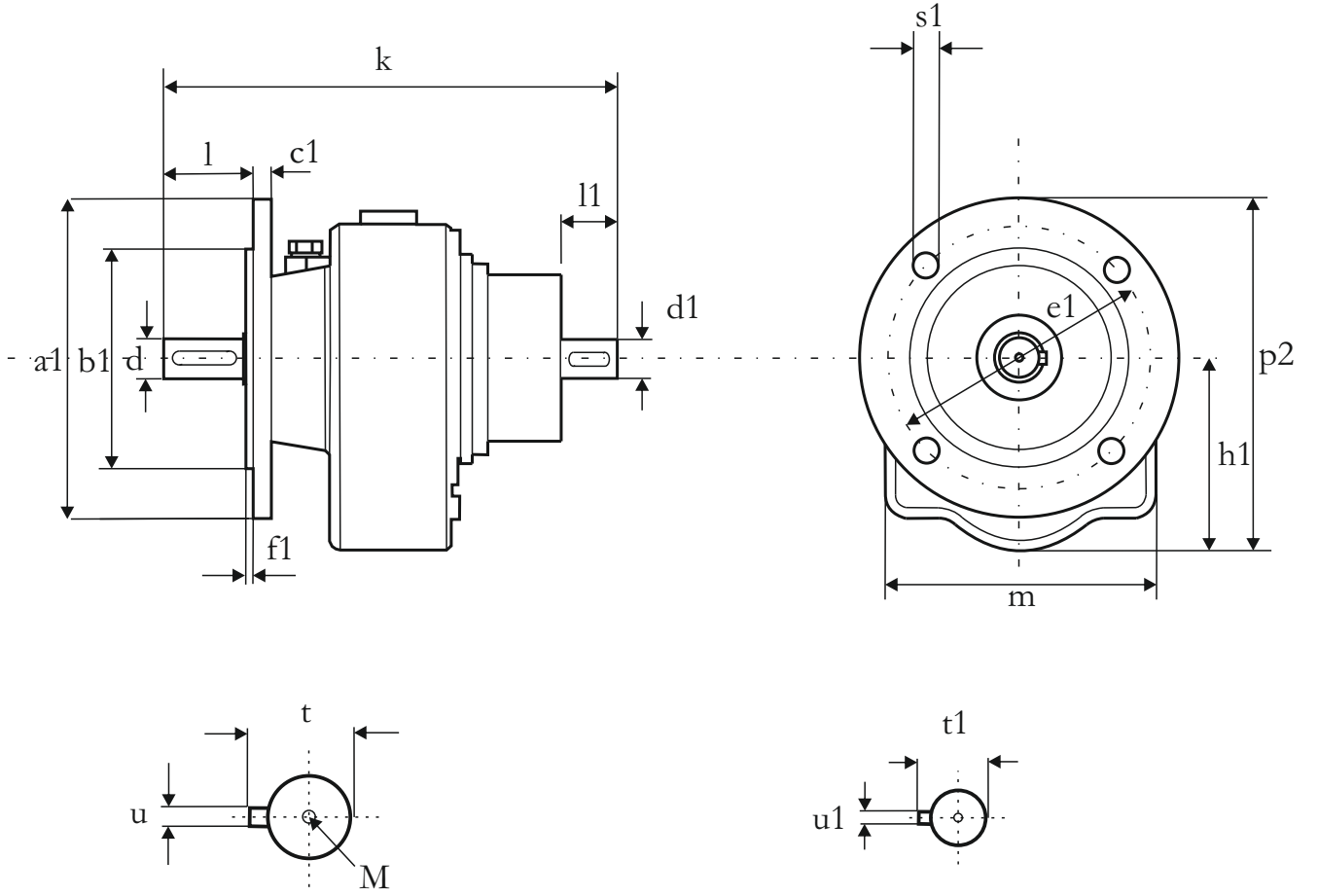
MİL ÇAP TOLERANSLARI
0-50 mm ISO K6
50mm üstü ISO J6

Shaft diameter tolerances
0-50 mm ISO K6
Up 50 mm ISO J6



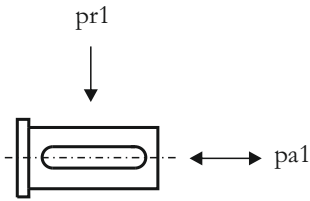
TB70 FT_V

HELİSEL DİŞLİ İKİ KADEMELİ W(T) TİPİ REDÜKTÖRLER
Helical geared W (T) type units, for double reduction



a1	b1	c1	e1	f1	s1	h1	p2	m	l	d	d1	k	l1
400	300	22	400	5	14	315	525	350	140	75	60	829	140

t	u	M	t1	u1
79,5	20	M16	64	14



Redüktörün giriş miline yüklenebilecek maksimum radyal ve aksel yükler.
Radial and axial loads on the input shaft

Yük
Load

Pr1 (N)	1800
Pa1(N)	1000

Giriş Devir Sayısı 1400
Output speed n2

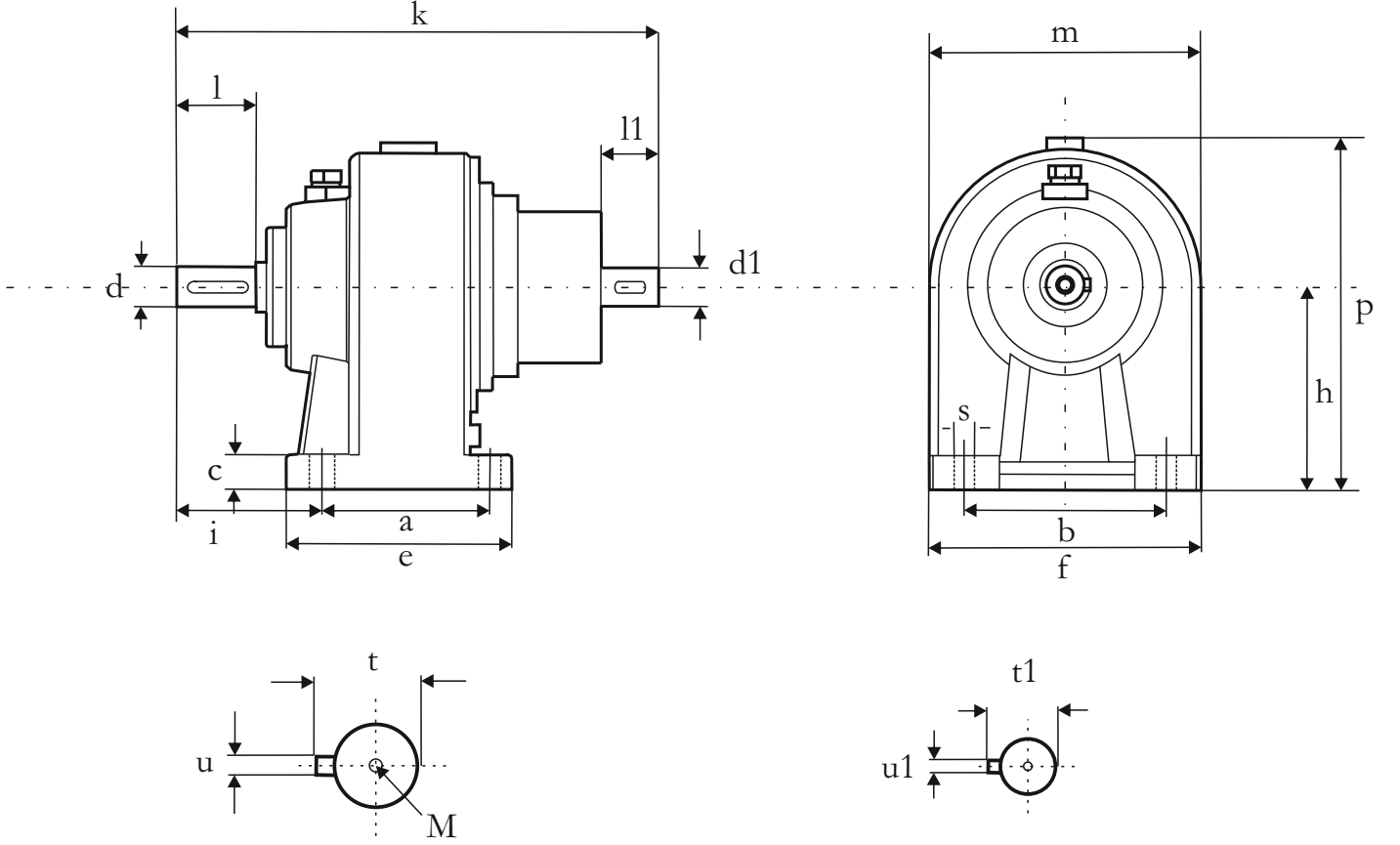
MİL ÇAP TOLERANSLARI
0-50 mm ISO K6
50mm üstü ISO J6

Shaft diameter tolerances
0-50 mm ISO K6
Up 50 mm ISO J6



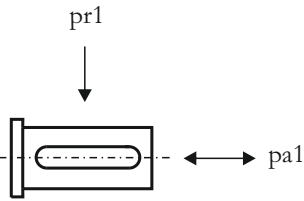
TB80 AT

HELİSEL DİŞLİ İKİ KADEMELİ W(T) TİPİ REDÜKTÖRLER
Helical geared W (T) type units, for double reduction



a	b	c	e	f	s	i	h	p	m	l	d	d1	k	l1
420	440	70	510	550	33	265	390	600	420	210	100	60	1000	140

t	u	M	t1	u1
106	28	M16	64	16



Redüktörün giriş miline yüklenebilecek maksimum radyal ve aksenal yükler.
Radial and axial loads on the input shaft

Yük
Load

Pr1 (N)	1800
Pa1(N)	1000

Giriş Devir Sayısı 1400
Output speed n2

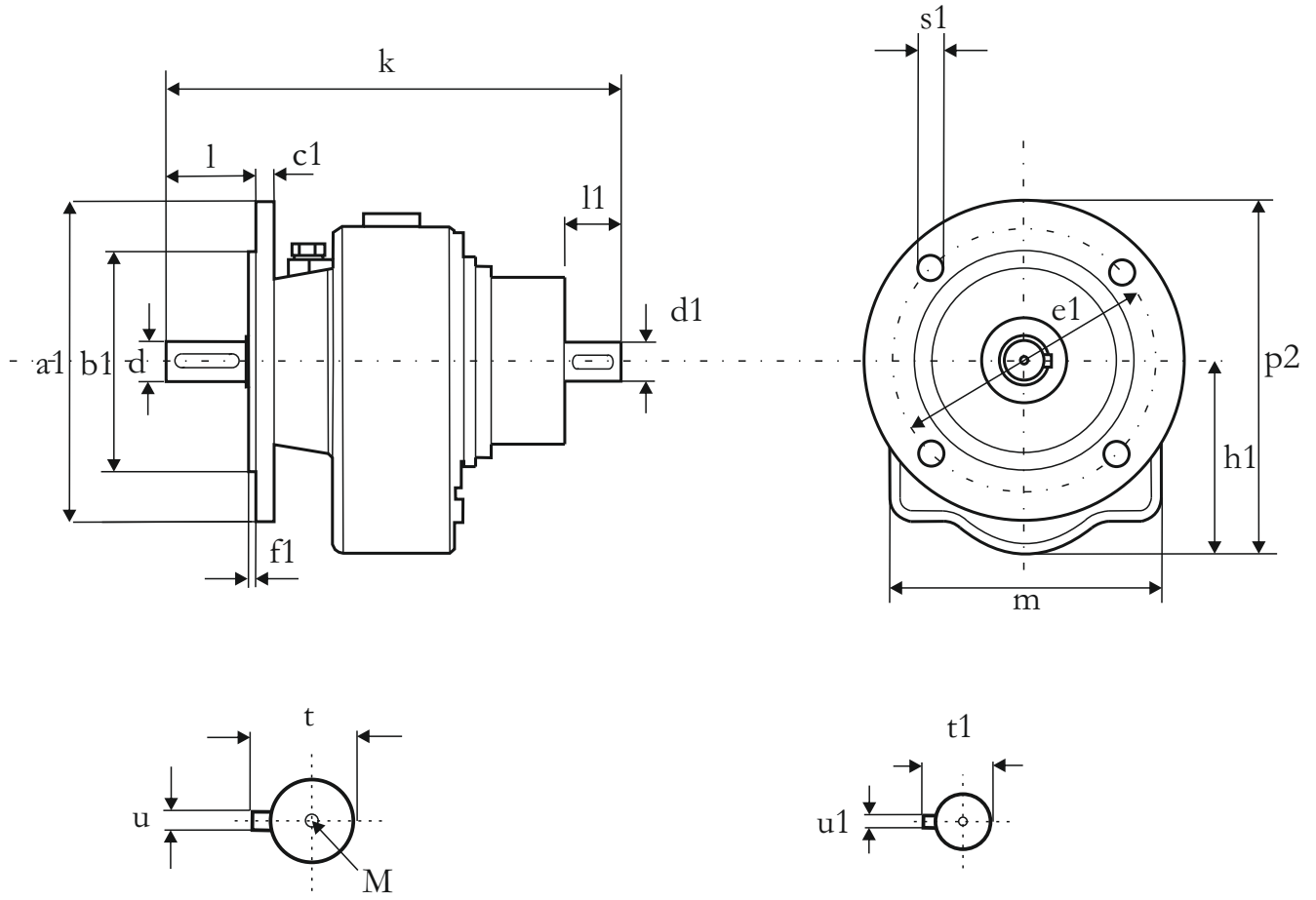
MİL ÇAP TOLERANSLARI
0-50 mm ISO K6
50mm üstü ISO J6

Shaft diameter tolerances
0-50 mm ISO K6
Up 50 mm ISO J6



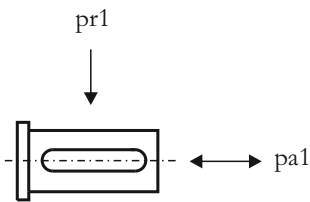
TB80 FT_{V-W}

HELİSEL DİŞLİ İKİ KADEMELİ W(T) TİPİ REDÜKTÖRLER
Helical geared W (T) type units, for double reduction



a1	b1	c1	e1	f1	s1	h1	p2	m	l	d	d1	k	l1
450	350	24	400	5	18	390	605	420	210	100	60	1000	140

t	u	M	t1	u1
106	28	M16	64	16



Redüktörün giriş miline yüklenebilecek maksimum radyal ve aksel yükler.
Radial and axial loads on the input shaft

Yük
Load

Pr1 (N)	1800
Pa1(N)	1000

Giriş Devir Sayısı 1400
Output speed n2

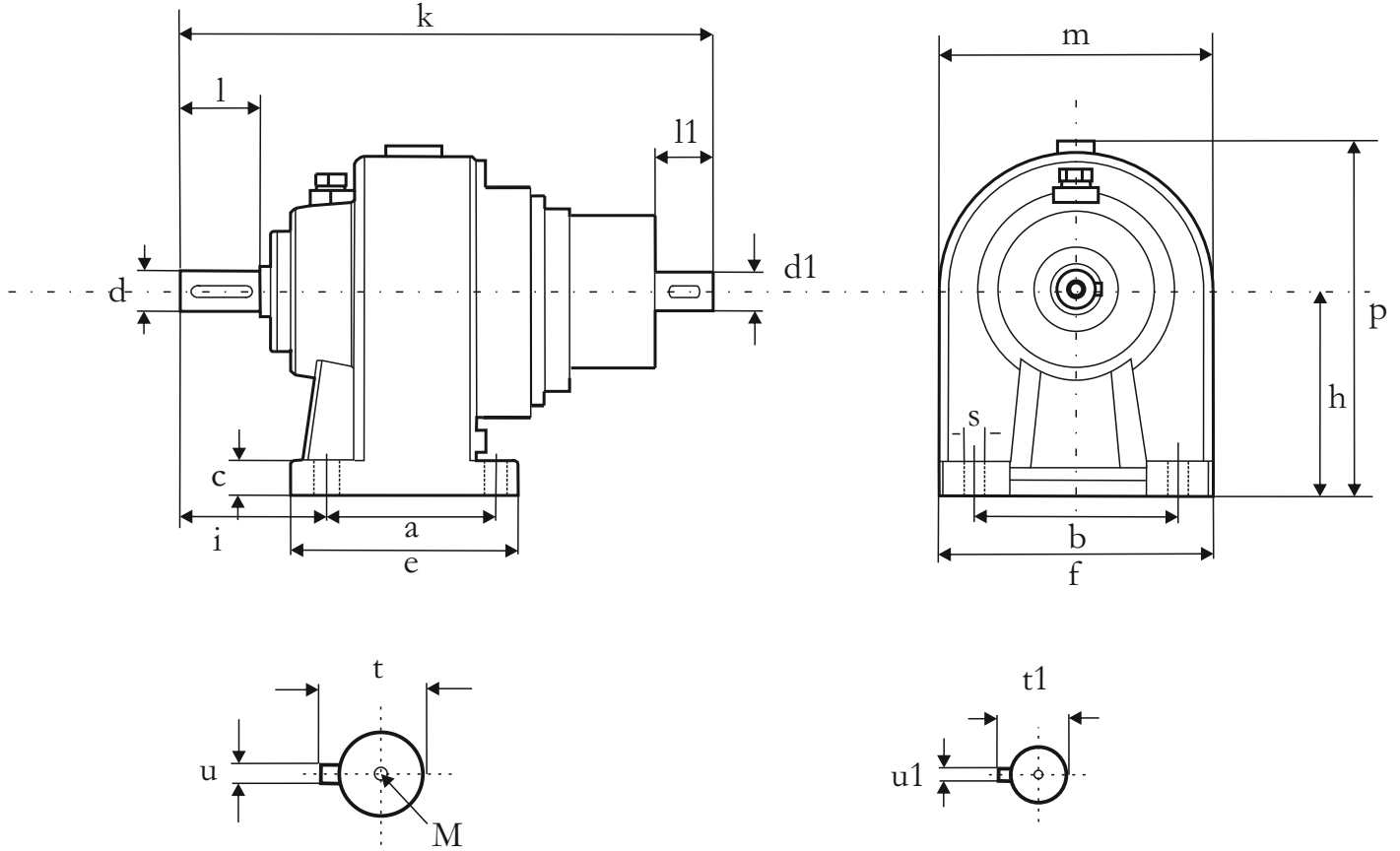
MİL ÇAP TOLERANSLARI
0-50 mm ISO K6
50mm üstü ISO J6

Shaft diameter tolerances
0-50 mm ISO K6
Up 50 mm ISO J6



TB010 AT

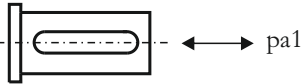
HELİSEL DİŞLİ ÜÇ KADEMELİ W(T) TİPİ REDÜKTÖRLER
Helical geared W (T) type units, for triple reduction



a	b	c	e	f	s	i	h	p	m	l	d	d1	k	l1
85	105	15	110	135	8,5	68	102	170	135	40	20	14	280	30

t	u	M	t1	u1
22,5	6	M6	16	5

pr1



Redüktörün giriş miline yüklenebilecek maksimum radyal ve aksenal yükler.
Radial and axial loads on the input shaft

Yük
Load

Pr1 (N)	650
Pa1(N)	400

Giriş Devir Sayısı 1400
Output speed n2

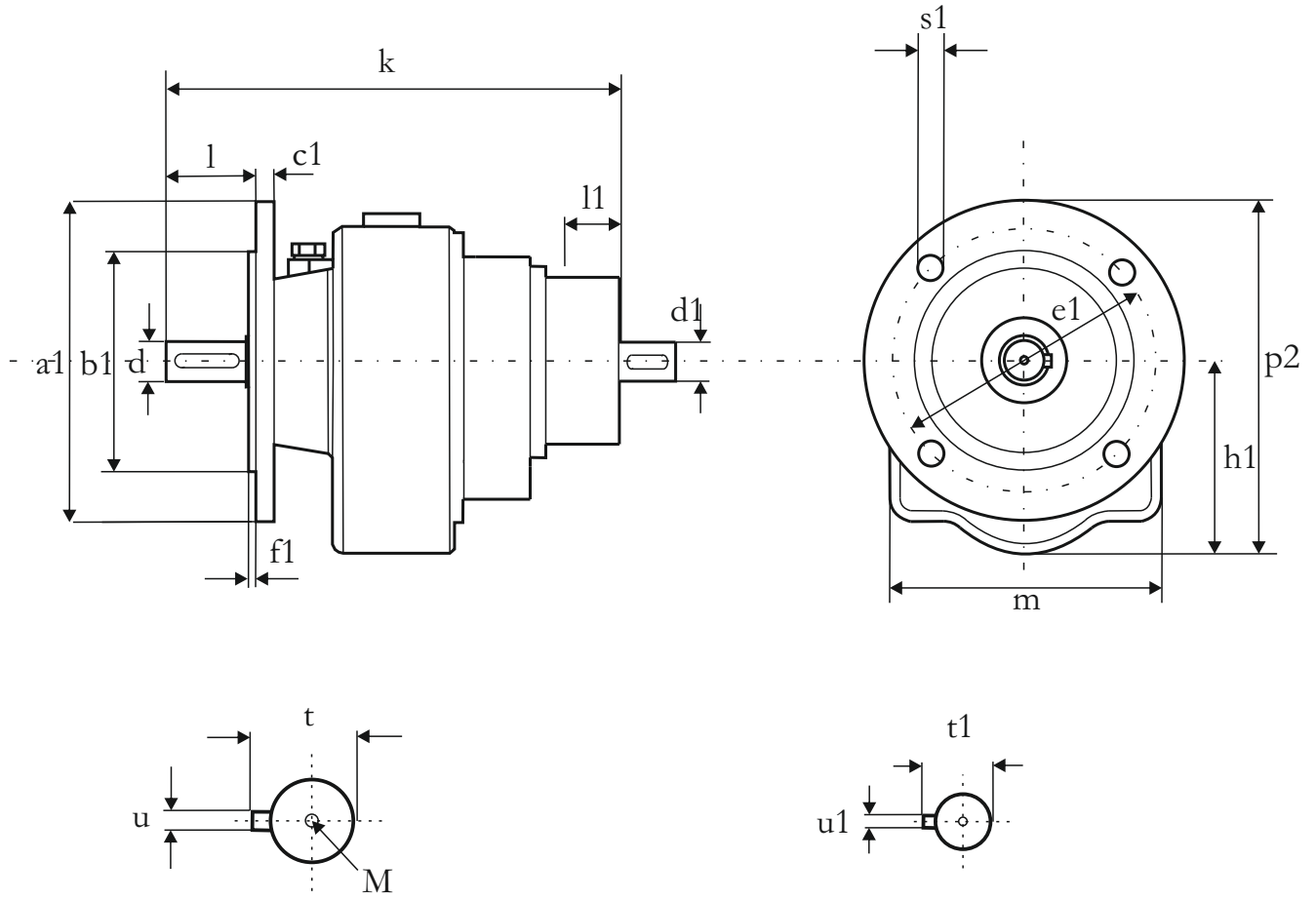
MİL ÇAP TOLERANSLARI
0-50 mm ISO K6
50mm üstü ISO J6

Shaft diameter tolerances
0-50 mm ISO K6
Up 50 mm ISO J6



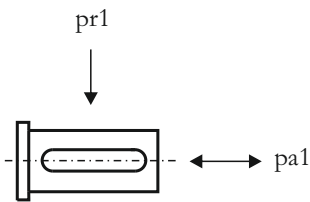
TB010 FT

HELİSEL DİŞLİ ÜÇ KADEMELİ W(T) TİPİ REDÜKTÖRLER
Helical geared W (T) type units, for triple reduction



a1	b1	c1	e1	f1	s1	h1	p2	m	l	d	d1	k	l1
160	110	10	130	3,5	9	102	178	135	40	20	14	280	30

t	u	M	t1	u1
22,5	6	M6	16	5



Redüktörün giriş miline yüklenebilecek maksimum radyal ve aksel yükler.
Radial and axial loads on the input shaft

Yük
Load

Pr1 (N)	650
Pa1(N)	400

Giriş Devir Sayısı 1400
Output speed n2

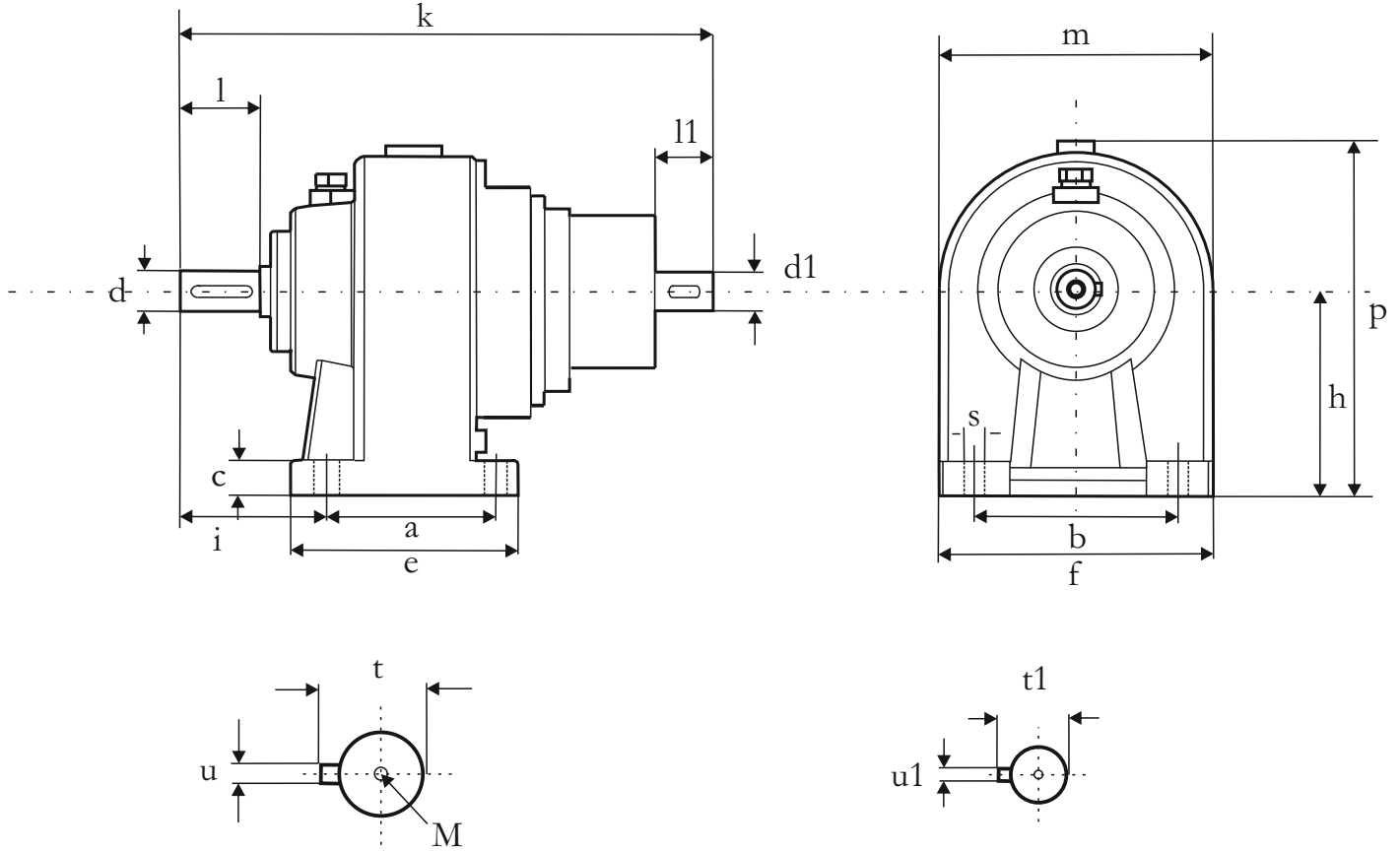
MİL ÇAP TOLERANSLARI
0-50 mm ISO K6
50mm üstü ISO J6

Shaft diameter tolerances
0-50 mm ISO K6
Up 50 mm ISO J6



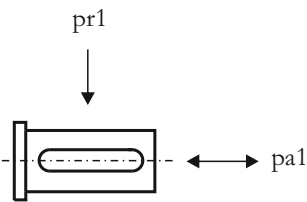
TB200 AT

HELİSEL DİŞLİ ÜÇ KADEMELİ W(T) TİPİ REDÜKTÖRLER
Helical geared W (T) type units, for triple reduction



a	b	c	e	f	s	i	h	p	m	l	d	d1	k	l1
100	130	13	125	155	10,5	94	125	200	150	50	25	19	328	40

t	u	M	t1	u1
28	8	M8	21,5	8



Redüktörün giriş miline yüklenebilecek maksimum radyal ve aksenal yükler.
Radial and axial loads on the input shaft

Yük
Load

Pr1 (N)	850
Pa1(N)	550

Giriş Devir Sayısı 1400
Output speed n2

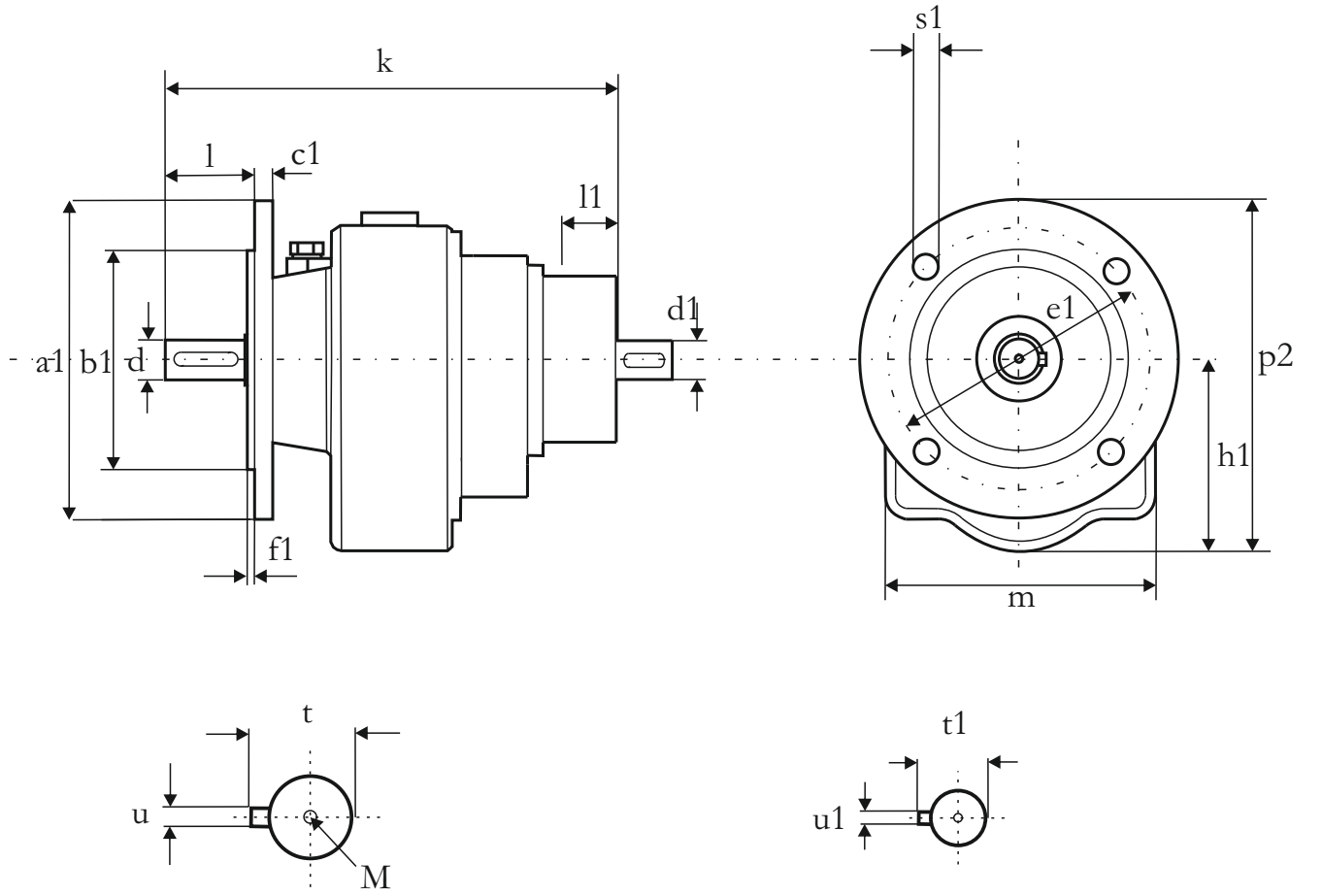
MİL ÇAP TOLERANSLARI
0-50 mm ISO K6
50mm üstü ISO J6

Shaft diameter tolerances
0-50 mm ISO K6
Up 50 mm ISO J6



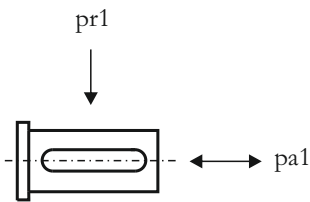
TB200 FT

HELİSEL DİŞLİ ÜÇ KADEMELİ W(T) TİPİ REDÜKTÖRLER
Helical geared W (T) type units, for triple reduction



a1	b1	c1	e1	f1	s1	h1	p2	m	l	d	d1	k	l1
160	110	12	130	3,5	9	125	203	150	50	25	19	328	40

t	u	M	t1	u1
28	8	M8	21,5	6



Redüktörün giriş miline yüklenebilecek maksimum radyal ve aksel yükler.
Radial and axial loads on the input shaft

Yük
Load

Pr1 (N)	850
Pa1(N)	550

Giriş Devir Sayısı 1400
Output speed n2

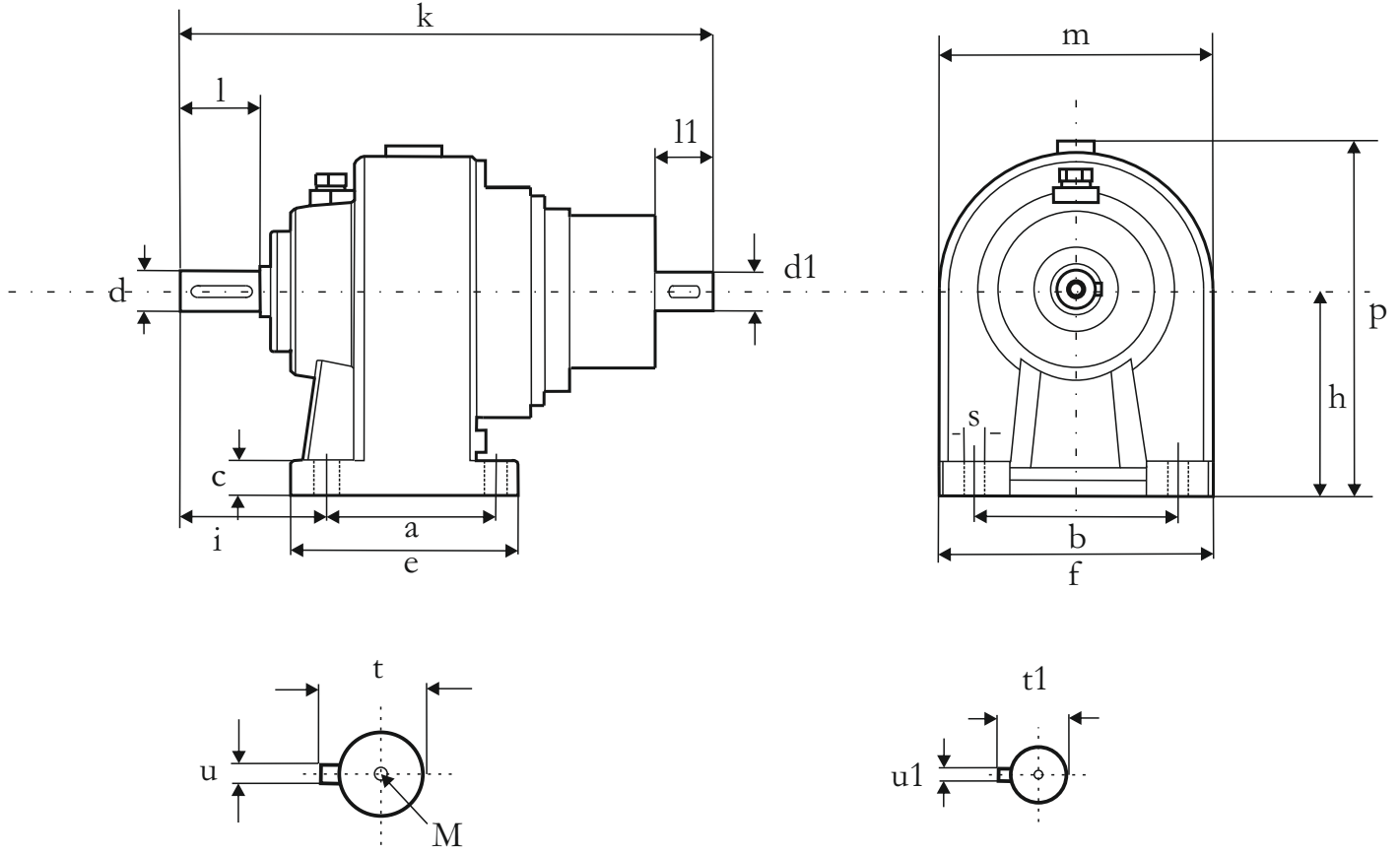
MİL ÇAP TOLERANSLARI
0-50 mm ISO K6
50mm üstü ISO J6

Shaft diameter tolerances
0-50 mm ISO K6
Up 50 mm ISO J6



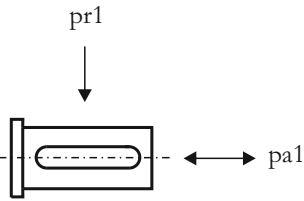
TB300 AT

HELİSEL DİŞLİ ÜÇ KADEMELİ W(T) TİPİ REDÜKTÖRLER
Helical geared W (T) type units, for triple reduction



a	b	c	e	f	s	i	h	p	m	l	d	d1	k	l1
90	185	20	125	210	13	86	155	240	170	70	35	24	359	50

t	u	M	t1	u1
38	10	M10	27	10



Redüktörün giriş miline yüklenebilecek maksimum radyal ve aksenal yükler.
Radial and axial loads on the input shaft

Yük
Load

Pr1 (N)	850
Pa1(N)	550

Giriş Devir Sayısı 1400
Output speed n2

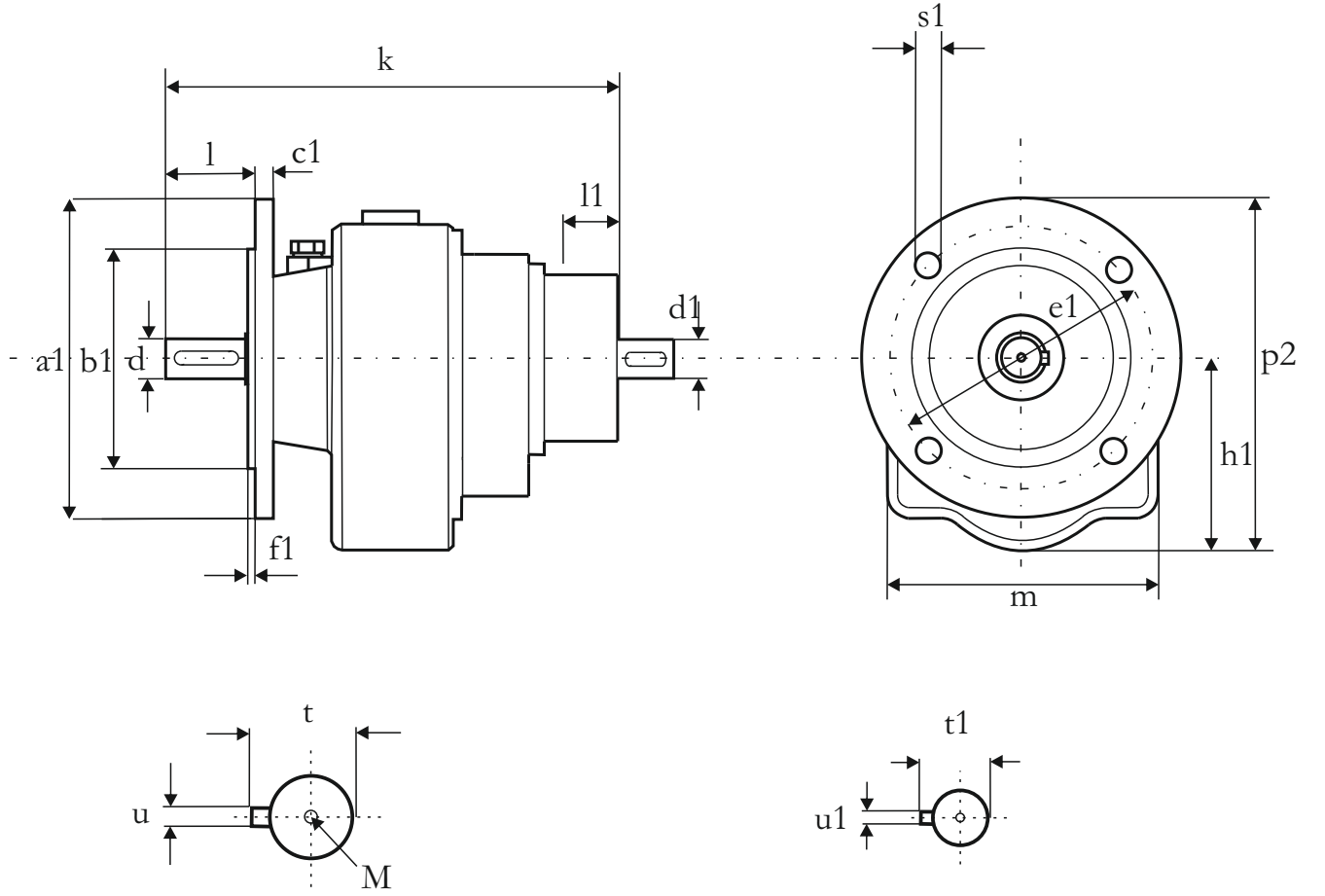
MİL ÇAP TOLERANSLARI
0-50 mm ISO K6
50mm üstü ISO J6

Shaft diameter tolerances
0-50 mm ISO K6
Up 50 mm ISO J6



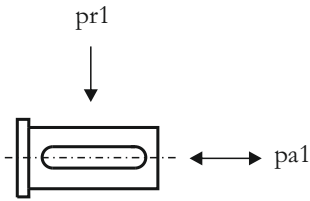
TB300 FT

HELİSEL DİŞLİ ÜÇ KADEMELİ W(T) TİPİ REDÜKTÖRLER
Helical geared W (T) type units, for triple reduction



a1	b1	c1	e1	f1	s1	h1	p2	m	l	d	d1	k	l1
200	130	12	165	3,5	9	155	253	170	70	35	24	359	50

t	u	M	t1	u1
38	10	M10	27	8



Redüktörün giriş miline yüklenebilecek maksimum radyal ve aksel yükler.
Radial and axial loads on the input shaft

Yük
Load

Pr1 (N)	850
Pa1(N)	550

Giriş Devir Sayısı 1400
Output speed n2

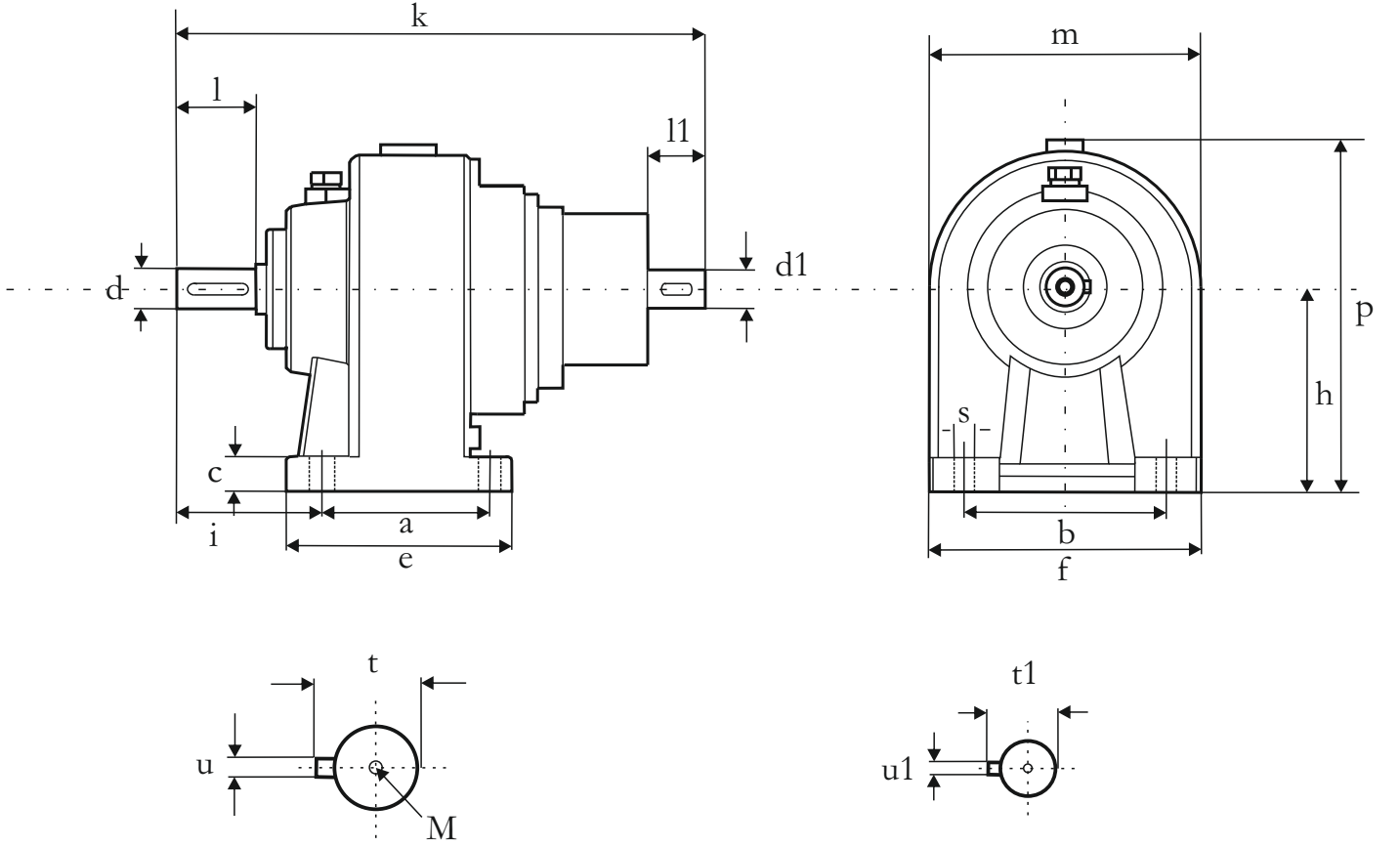
MİL ÇAP TOLERANSLARI
0-50 mm ISO K6
50mm üstü ISO J6

Shaft diameter tolerances
0-50 mm ISO K6
Up 50 mm ISO J6



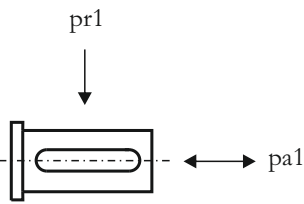
TB330 AT

HELİSEL DİŞLİ ÜÇ KADEMELİ W(T) TİPİ REDÜKTÖRLER
Helical geared W (T) type units, for triple reduction



a	b	c	e	f	s	i	h	p	m	l	d	d1	k	l1
134	175	25	165	215	13	120	175	275	200	80	40	32	467	70

t	u	M	t1	u1
43	14	M12	35	10



Redüktörün giriş miline yüklenebilecek maksimum radyal ve aksenal yükler.
Radial and axial loads on the input shaft

Yük
Load

Pr1 (N)	1100
Pa1(N)	700

Giriş Devir Sayısı 1400
Output speed n2

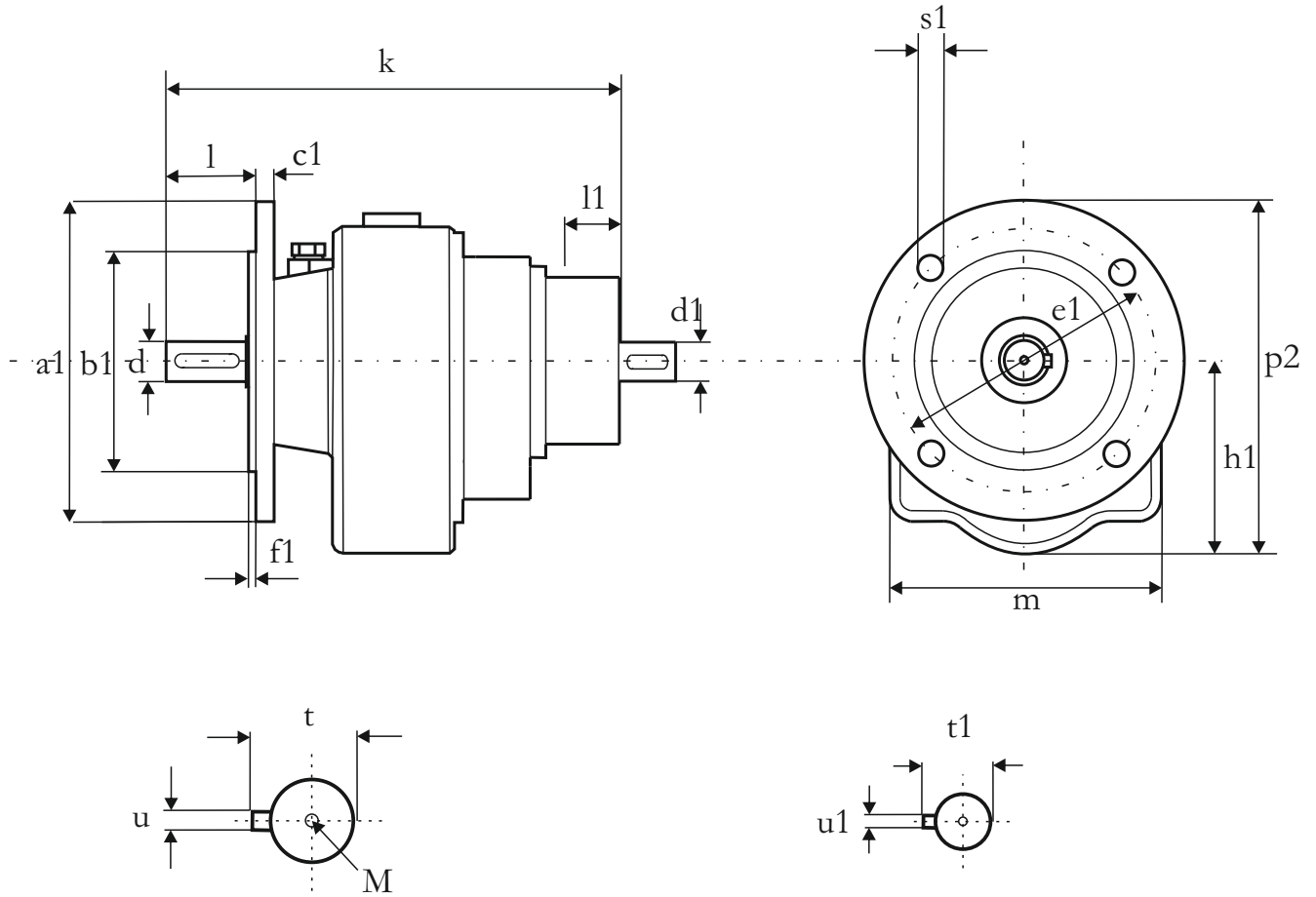
MİL ÇAP TOLERANSLARI
0-50 mm ISO K6
50mm üstü ISO J6

Shaft diameter tolerances
0-50 mm ISO K6
Up 50 mm ISO J6



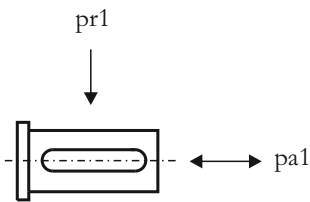
TB330 FT

HELİSEL DİŞLİ ÜÇ KADEMELİ W(T) TİPİ REDÜKTÖRLER
Helical geared W (T) type units, for triple reduction



a1	b1	c1	e1	f1	s1	h1	p2	m	l	d	d1	k	l1
200	130	12	165	3,5	9	175	273	200	80	40	32	425	70

t	u	M	t1	u1
43	14	M12	35	10



Redüktörün giriş miline yüklenebilecek maksimum radyal ve aksel yükler.
Radial and axial loads on the input shaft

Yük
Load

Pr1 (N)	1100
Pa1(N)	700

Giriş Devir Sayısı 1400
Output speed n2

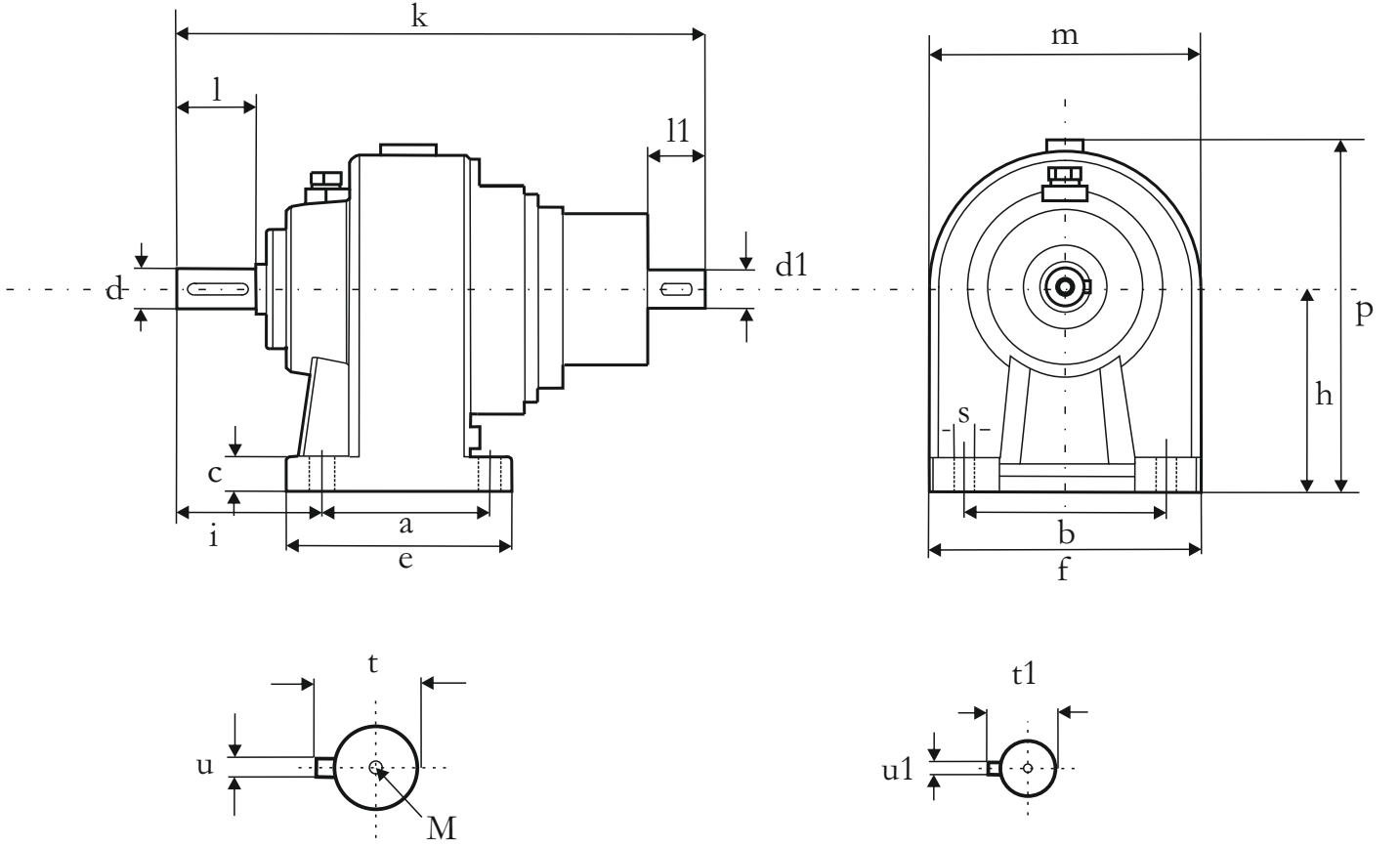
MİL ÇAP TOLERANSLARI
0-50 mm ISO K6
50mm üstü ISO J6

Shaft diameter tolerances
0-50 mm ISO K6
Up 50 mm ISO J6



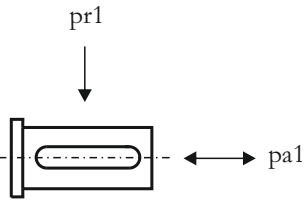
TB500 AT

HELİSEL DİŞLİ ÜÇ KADEMELİ W(T) TİPİ REDÜKTÖRLER
Helical geared W (T) type units, for triple reduction



a	b	c	e	f	s	i	h	p	m	l	d	d1	k	l1
190	260	35	230	314	18	134	250	375	250	100	50	38	577	80

t	u	M	t1	u1
53,5	16	M14	41	10



Redüktörün giriş miline yüklenebilecek maksimum radyal ve aksenal yükler.
Radial and axial loads on the input shaft

Yük
Load

Pr1 (N)	1250
Pa1(N)	800

Giriş Devir Sayısı 1400
Output speed n2

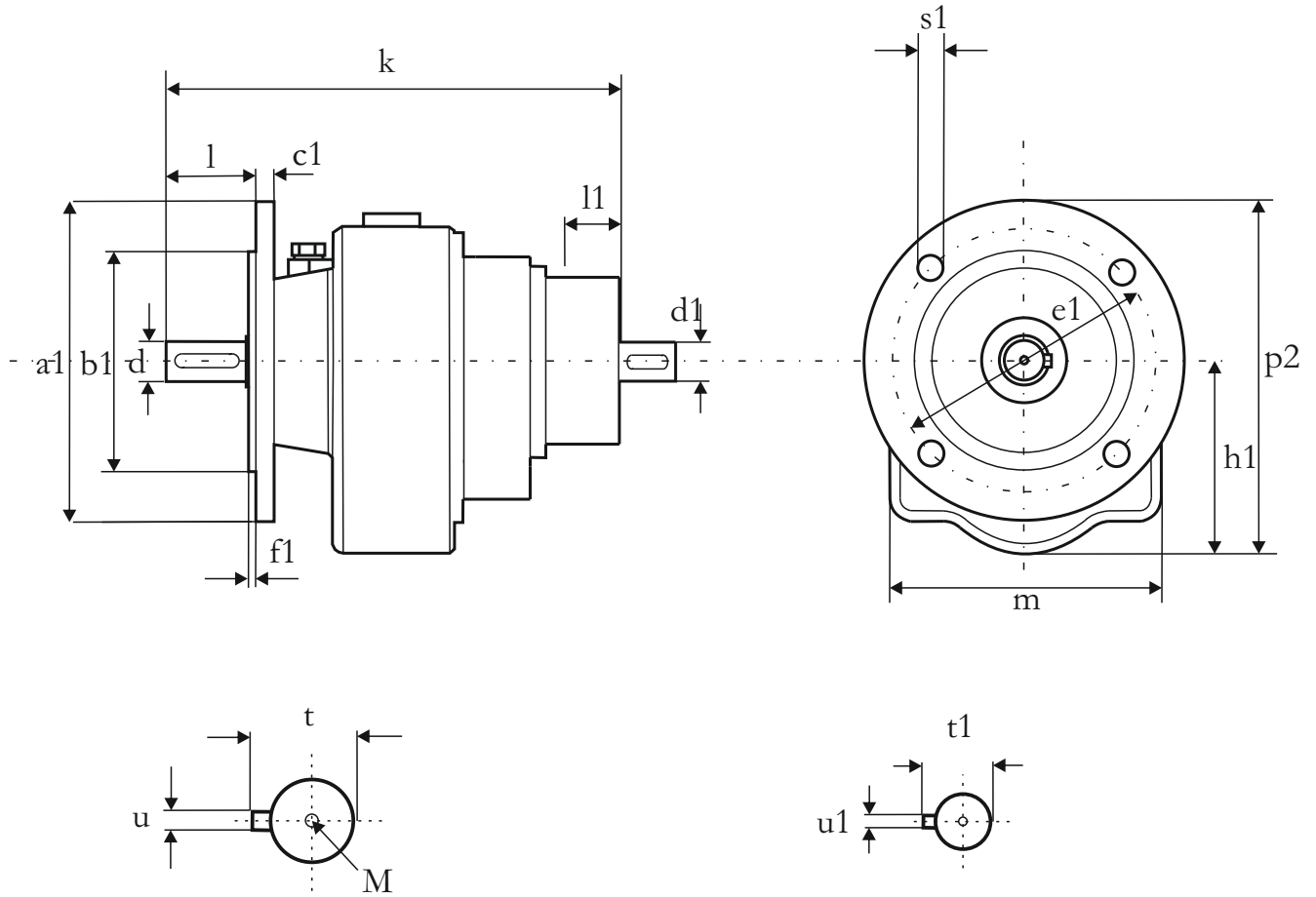
MİL ÇAP TOLERANSLARI
0-50 mm ISO K6
50mm üstü ISO J6

Shaft diameter tolerances
0-50 mm ISO K6
Up 50 mm ISO J6



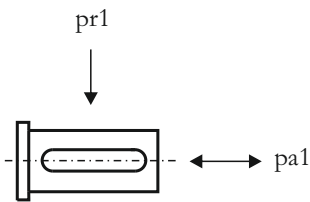
TB500 FT

HELİSEL DİŞLİ ÜÇ KADEMELİ W(T) TİPİ REDÜKTÖRLER
Helical geared W (T) type units, for triple reduction



a1	b1	c1	e1	f1	s1	h1	p2	m	l	d	d1	k	l1
250	180	16	215	4	14	250	395	250	100	50	38	577	80

t	u	M	t1	u1
53,5	16	M14	41	10



Redüktörün giriş miline yüklenebilecek maksimum radyal ve aksel yükler.
Radial and axial loads on the input shaft

Yük
Load

Pr1 (N)	1250
Pa1(N)	800

Giriş Devir Sayısı 1400
Output speed n2

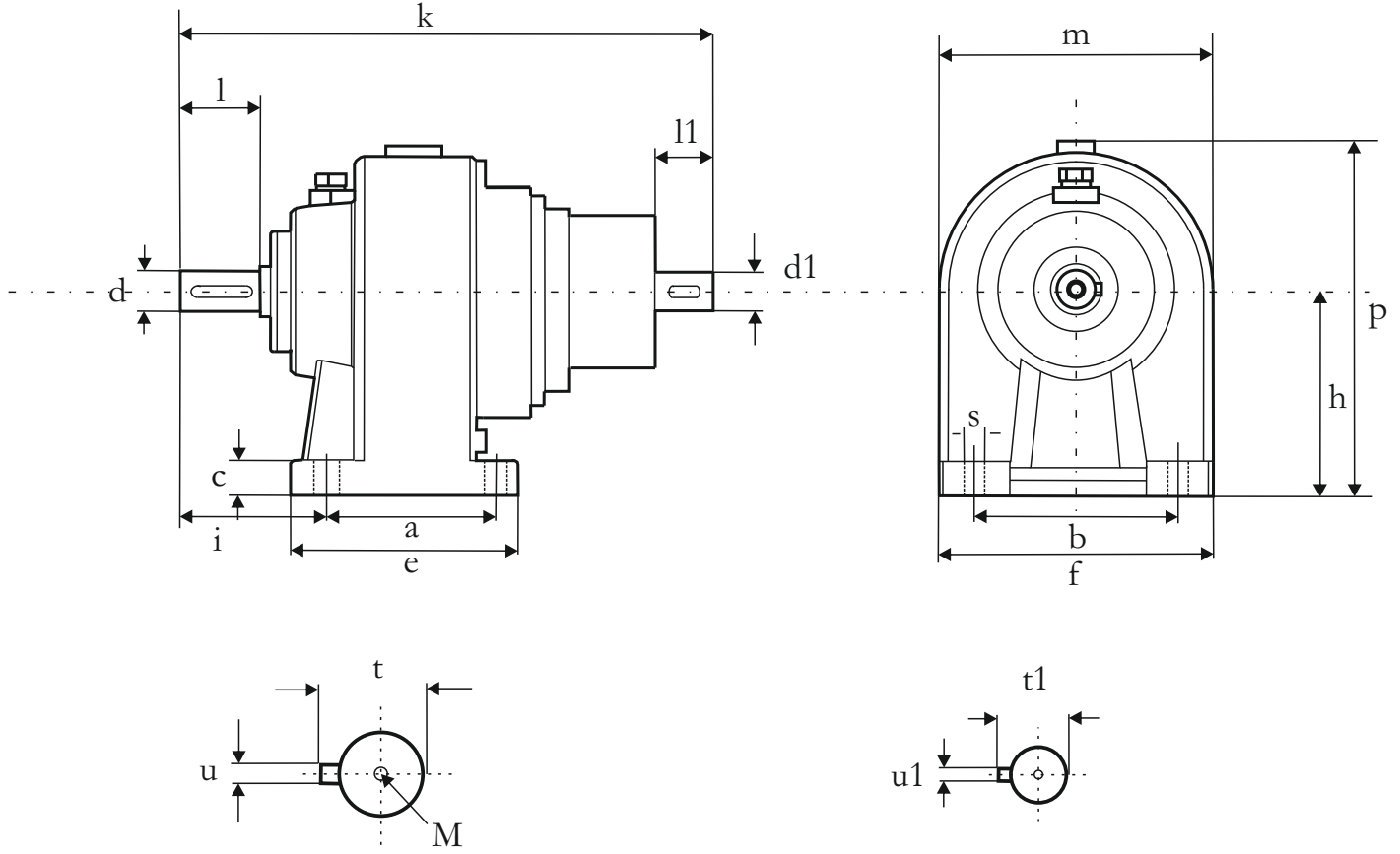
MİL ÇAP TOLERANSLARI
0-50 mm ISO K6
50mm üstü ISO J6

Shaft diameter tolerances
0-50 mm ISO K6
Up 50 mm ISO J6



TB600 AT

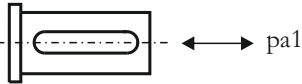
HELİSEL DİŞLİ ÜÇ KADEMELİ W(T) TİPİ REDÜKTÖRLER
Helical geared W (T) type units, for triple reduction



a	b	c	e	f	s	i	h	p	m	l	d	d1	k	l1
240	325	45	300	400	22	169	280	430	300	130	65	42	659	85

t	u	M	t1	u1
69	18	M16	45	12

pr1



Redüktörün giriş miline yüklenebilecek maksimum radyal ve aksenal yükler.
Radial and axial loads on the input shaft

Yük
Load

Pr1 (N)	1400
Pa1(N)	900

Giriş Devir Sayısı 1400
Output speed n2

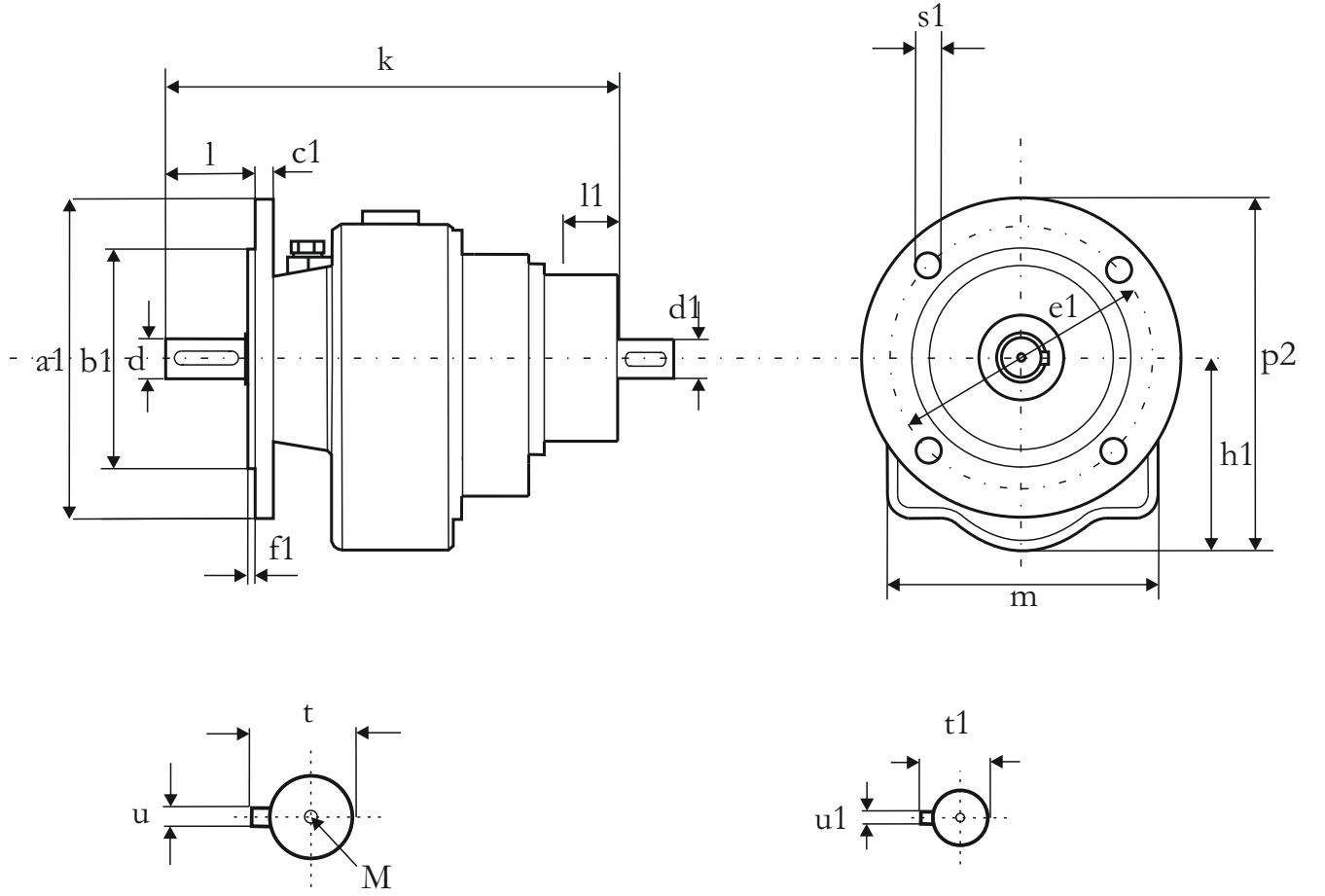
MİL ÇAP TOLERANSLARI
0-50 mm ISO K6
50mm üstü ISO J6

Shaft diameter tolerances
0-50 mm ISO K6
Up 50 mm ISO J6



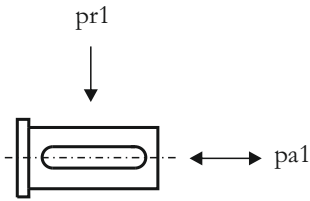
TB600 FT

HELİSEL DİŞLİ ÜÇ KADEMELİ W(T) TİPİ REDÜKTÖRLER
Helical geared W (T) type units, for triple reduction



a1	b1	c1	e1	f1	s1	h1	p2	m	l	d	d1	k	l1
300	230	14	265	3,5	11	280	425	300	130	65	42	659	85

t	u	M	t1	u1
69	18	M16	45	12



Redüktörün giriş miline yüklenebilecek maksimum radyal ve aksenal yükler.
Radial and axial loads on the input shaft

Yük
Load

Pr1 (N)	1400
Pa1(N)	900

Giriş Devir Sayısı 1400
Output speed n2

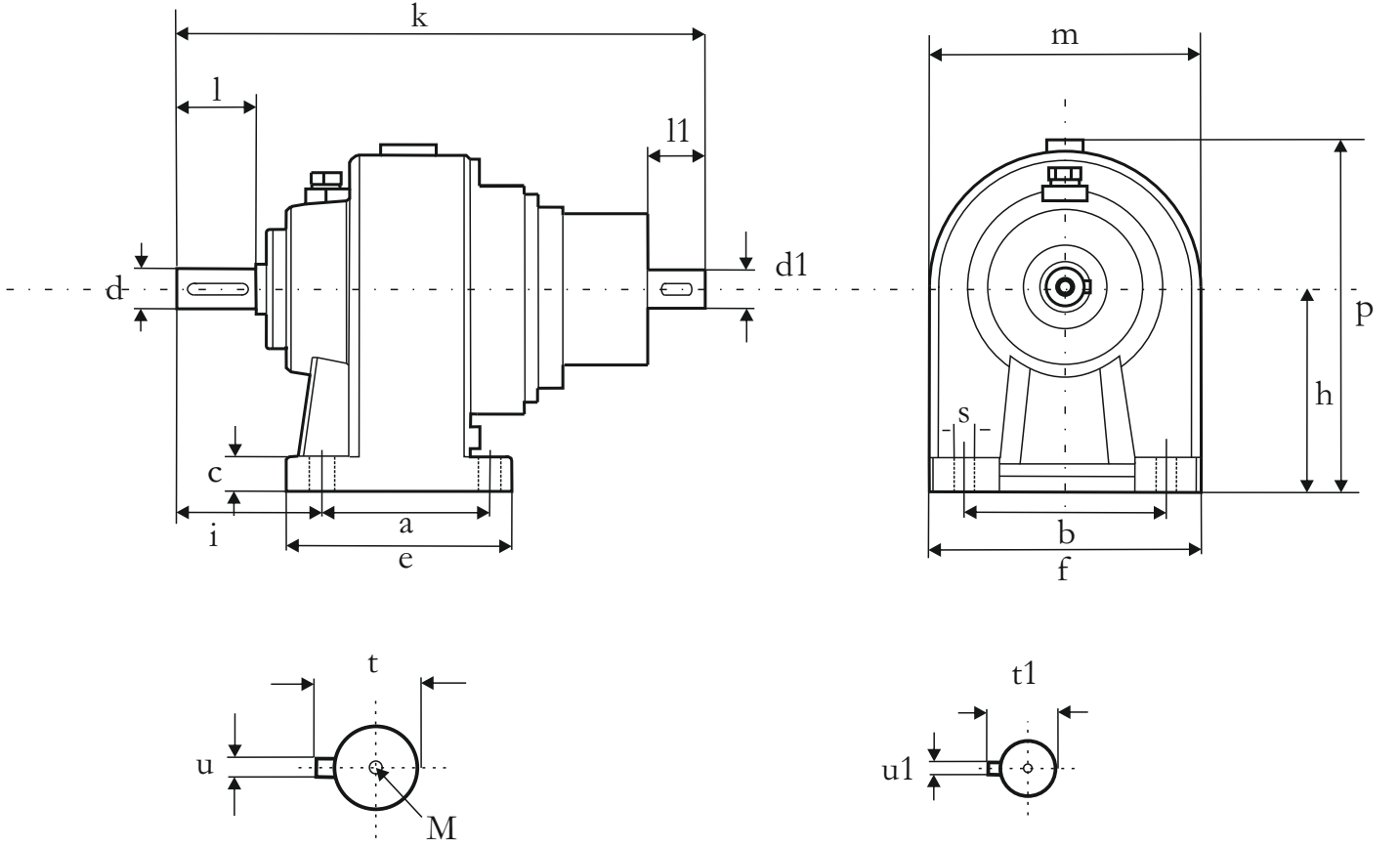
MİL ÇAP TOLERANSLARI
0-50 mm ISO K6
50mm üstü ISO J6

Shaft diameter tolerances
0-50 mm ISO K6
Up 50 mm ISO J6



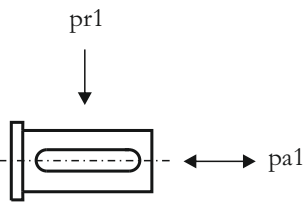
TB700 AT

HELİSEL DİŞLİ ÜÇ KADEMELİ W(T) TİPİ REDÜKTÖRLER
Helical geared W (T) type units, for triple reduction



a	b	c	e	f	s	i	h	p	m	l	d	d1	k	l1
300	360	55	370	450	26	185	315	490	350	140	75	60	784	140

t	u	M	t1	u1
79,5	20	M16	64	14



Redüktörün giriş miline yüklenebilecek maksimum radyal ve aksenal yükler.
Radial and axial loads on the input shaft

Yük
Load

Pr1 (N)	1800
Pa1(N)	1000

Giriş Devir Sayısı 1400
Output speed n2

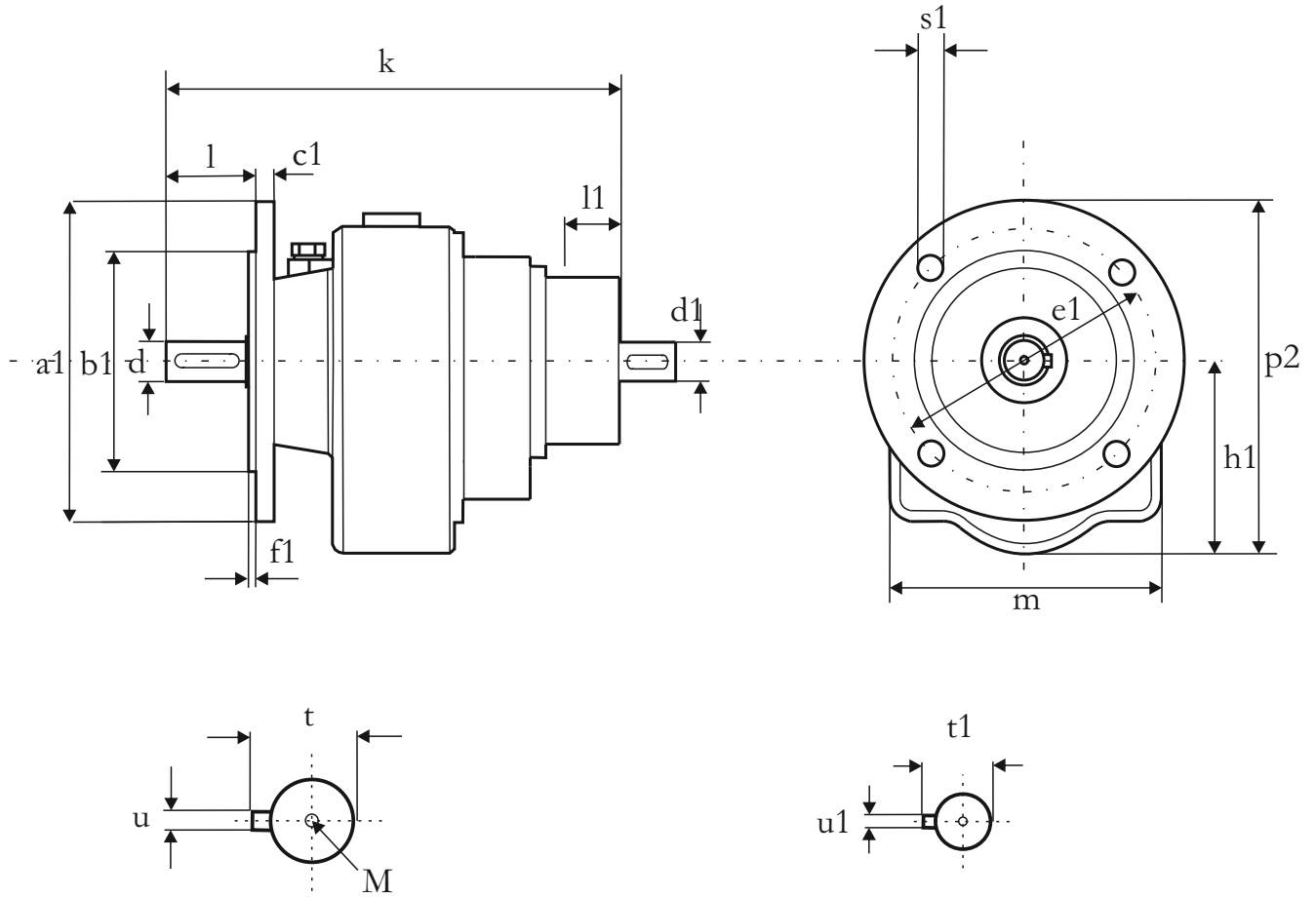
MİL ÇAP TOLERANSLARI
0-50 mm ISO K6
50mm üstü ISO J6

Shaft diameter tolerances
0-50 mm ISO K6
Up 50 mm ISO J6



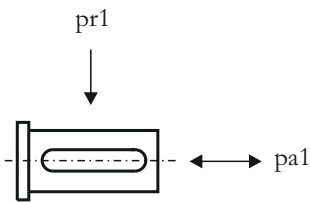
TB700 FT

HELİSEL DİŞLİ ÜÇ KADEMELİ W(T) TİPİ REDÜKTÖRLER
Helical geared W (T) type units, for triple reduction



a1	b1	c1	e1	f1	s1	h1	p2	m	l	d	d1	k	l1
300	230	20	265	4	14	315	450	350	140	75	60	784	140

t	u	M	t1	u1
79,5	20	M16	64	14



Redüktörün giriş miline yüklenebilecek maksimum radyal ve aksel yükler.
Radial and axial loads on the input shaft

Yük
Load

Pr1 (N)	1800
Pa1(N)	1000

Giriş Devir Sayısı 1400
Output speed n2

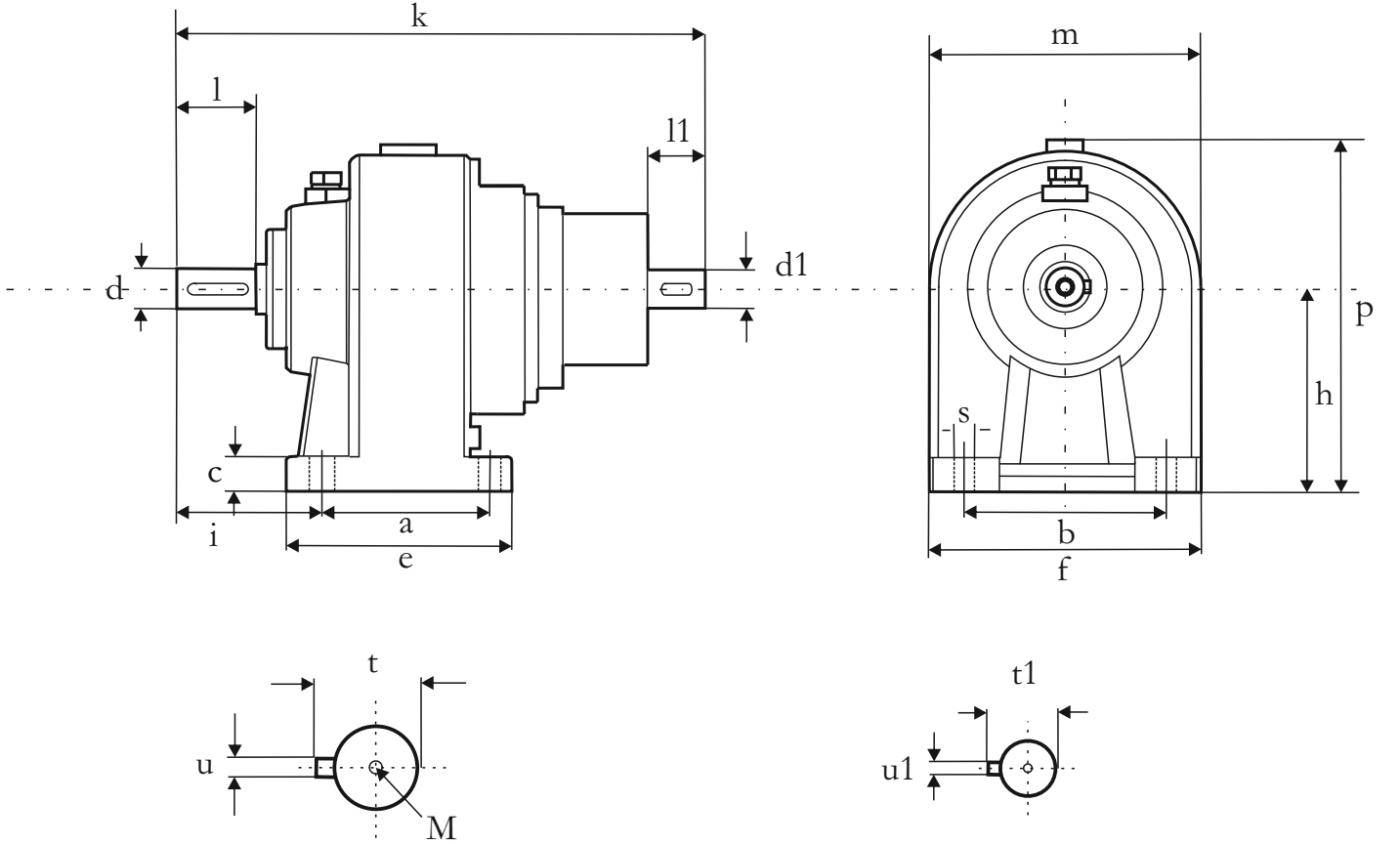
MİL ÇAP TOLERANSLARI
0-50 mm ISO K6
50mm üstü ISO J6

Shaft diameter tolerances
0-50 mm ISO K6
Up 50 mm ISO J6



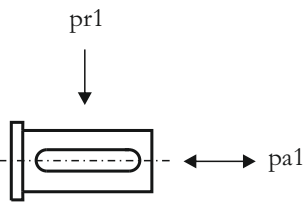
TB800 AT

HELİSEL DİŞLİ ÜÇ KADEMELİ W(T) TİPİ REDÜKTÖRLER
Helical geared W (T) type units, for triple reduction



a	b	c	e	f	s	i	h	p	m	l	d	d1	k	l1
420	440	70	510	550	33	265	390	600	420	210	100	60	1028	140

t	u	M	t1	u1
106	28	M16	64	16



Redüktörün giriş miline yüklenebilecek maksimum radyal ve aksenal yükler.
Radial and axial loads on the input shaft

Yük
Load

Pr1 (N)	1800
Pa1(N)	1000

Giriş Devir Sayısı 1400
Output speed n2

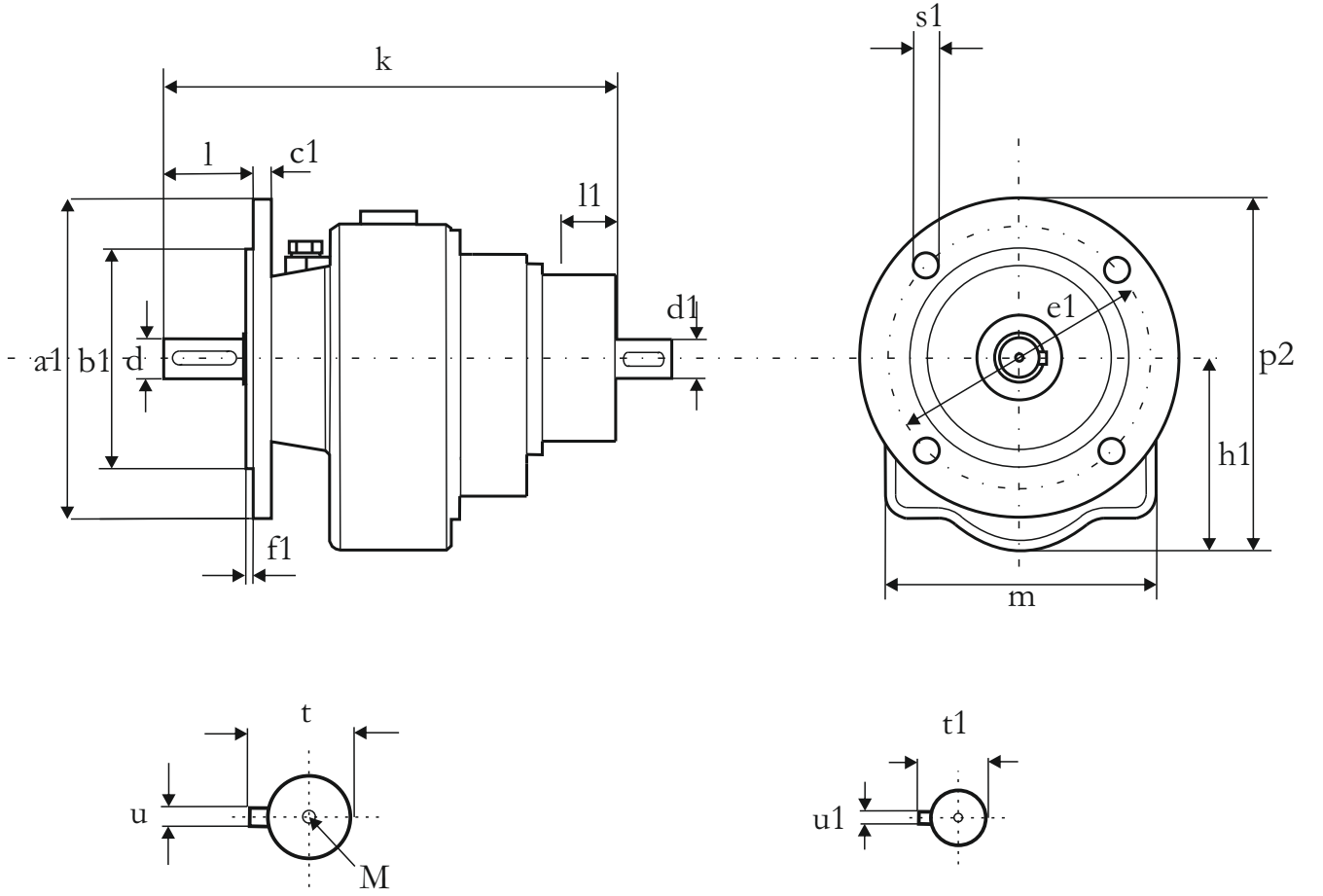
MİL ÇAP TOLERANSLARI
0-50 mm ISO K6
50mm üstü ISO J6

Shaft diameter tolerances
0-50 mm ISO K6
Up 50 mm ISO J6



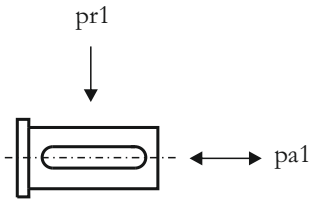
TB800 FT

HELİSEL DİŞLİ ÜÇ KADEMELİ W(T) TİPİ REDÜKTÖRLER
Helical geared W (T) type units, for triple reduction



a1	b1	c1	e1	f1	s1	h1	p2	m	l	d	d1	k	l1
450	350	24	400	5	18	390	605	420	210	100	60	1000	140

t	u	M	t1	u1
106	28	M16	64	16



Redüktörün giriş miline yüklenebilecek maksimum radyal ve aksel yükler.
Radial and axial loads on the input shaft

Yük
Load

Pr1 (N)	1800
Pa1(N)	1000

Giriş Devir Sayısı 1400
Output speed n2

MİL ÇAP TOLERANSLARI
0-50 mm ISO K6
50mm üstü ISO J6

Shaft diameter tolerances
0-50 mm ISO K6
Up 50 mm ISO J6